



New England Telehealth Consortium

Healthcare Connect Fund

**Consortium WAN, Internet, and
Equipment**

Request for Proposal

RFP-3153

1. Statement of Purpose

- 1.1 Established by the Federal Communications Commission's ("FCC") Report and Order released December 21, 2012 (FCC 12-150), the Healthcare Connect Fund is a Universal Service Fund program, authorized by Congress and administered by the Universal Service Administrative Company ("USAC"). This Request for Proposal ("RFP") seeks services to be provided pursuant to the Healthcare Connect Fund.
- 1.2 The New England Telehealth Consortium ("NETC") is a regional healthcare consortium in northern New England comprised of over 300 healthcare providers. NETC was formed in 2007 in response to the FCC's Rural Health Care Pilot Program and was the recipient of \$24.6m in funding commitment, the largest single award through the pilot program.
- 1.3 NETC is comprised of both rural and urban locations, which allows the consortium to meet the needs of patients at any location within the network, even if those patients have to travel to an urban location for specialized care.
- 1.4 NETC operates a four-state redundant IP/MPLS private network across three states, providing private network services, and commodity Internet connections for participating healthcare providers.
- 1.5 In addition to the existing NETC network infrastructure, participating healthcare systems often require additional private and public network facilities that are interconnected with the primary NETC network. These additional network facilities are eligible for subsidy under the Healthcare Connect Fund.
- 1.6 This RFP seeks pricing for WAN and Internet for New England Telehealth Consortium, who will be the Billing Entity associated with this RFP.

2. Background & Purpose

- 2.1 For more than twelve years, NETC has successfully operated a 300+ site IP/MPLS private network across Maine, New Hampshire, Vermont, and Massachusetts. Throughout this period, NETC has maintained an exemplary standard of service, evidenced by 99.999% core network uptime. Recognizing the rapid evolution of healthcare technology and the growing demand for flexible, high-performance connectivity, NETC has undertaken a comprehensive evaluation of the current network design over the last year and a half. During this process, the NETC engineering team conducted market research, evaluated the financial feasibility of new network architectures, and assessed the technical requirements of SD-WAN solutions. NETC surveyed its members to understand their specific needs and priorities, ensuring that the consortium's infrastructure remains relevant, cost-effective, and aligned with customer expectations.
- 2.2 This Request for Proposal is therefore being issued to obtain competitive pricing and solutions for both existing (MPLS-based) and emerging (SD-WAN or equivalent) network technologies. NETC's goal is to rebuild and enhance the network's core design in a manner that optimally supports our members' telehealth applications, data sharing requirements, and patient care priorities, now and into the future. By seeking proposals for both current and new innovative technologies, NETC aims to continue providing robust, reliable connectivity across its four-state network while embracing the flexibility and scalability offered by next-generation solutions.

3. Project Correspondence and Questions

3.1 All project correspondence and questions shall be by email to:

RFP Administrator
HealthConnect Networks
145 Exchange Street
Bangor, ME 04401

4. Schedule

- 4.1 Proposals will be disqualified if an electronic copy, in either Microsoft Word or Portable Document Format (preferred), is not received prior to the Allowable Contract Selection Date (ACSD) listed on USAC's website; unless no other proposals are received. <https://rhc.usac.org/hcf/public/searchPosted.htm>
- 4.2 This RFP has been submitted with a 28-day competitive bidding period.
- 4.3 Proposals shall be submitted to RFP Administrator, HealthConnect Networks, by email at rfp@healthconnectnetworks.com.
- 4.4 Please indicate "NETC RFP-3153 Proposal" on the email subject line.

5. Instructions to Responding Vendors

- 5.1 Responding Vendors shall use the numbering convention in this RFP when formatting their response. The Responding Vendor's response shall be explained in detail and shall indicate how the Responding Vendor proposes to satisfy each requirement, where necessary. **At the very least, the Responding Vendor must indicate compliance, non-compliance, understood or exception for each line item.**
- 5.2 Responding Vendors shall cite specific terms and conditions to which the Responding Vendor takes exception. The Responding Vendor shall state the exact requirement to which exception is taken. Any cost impact associated with an exception shall be identified and included in the proposal.
- 5.3 All proposals shall be electronic and signed by the Responding Vendor.
- 5.4 Responding Vendors should submit any questions, noted errors, discrepancies, ambiguities, exceptions, or deficiencies they have concerning this RFP by emailing such requests, with "NETC RFP-3153 Inquiry" in the subject line, to RFP Administrator, HealthConnect Networks at rfp@healthconnectnetworks.com on or before the 14th day following the posting of this RFP on the USAC website. Answers to all questions/requests will be posted on the NETC website, www.netelc.org, on or before the 20th day following the posting of this RFP on the USAC website. If applicable, state the section number being referenced.
- 5.5 Responding Vendors shall take all responsibility for any errors or omissions in their quote or proposal.
- 5.6 No contract will be awarded except to responsible vendors capable of performing the work requested. Responding Vendor's employees shall be trained and qualified to perform the work and operate all required equipment. Before the award of the Contract, any Responding Vendor may be required to show that they have the necessary facilities, experience, ability and financial resources to perform the work in a satisfactory manner.

- 5.7 Requested Contract Period: NETC requests a Master Services Agreement (MSA) with a 10-year term. The MSA shall allow for circuit service order contract periods of 24-month, 36-month, and 48-month terms.
- 5.8 All proposals submitted shall be valid for one year, or until the contract is signed, whichever comes first.
- 5.9 Negligence on the part of the Responding Vendor in preparing the proposal confers no right of withdrawal after the time fixed for the receipt of the proposals.
- 5.10 All proposals shall provide a straightforward, concise delineation of the Responding Vendor's capabilities to satisfy the requirements of this invitation. Emphasis should be on completeness and clarity of content.
- 5.11 NETC reserves the right to require Responding Vendors to demonstrate a proof of concept of their offering.
- 5.12 It is the responsibility of the Responding Vendors to review, evaluate and request clarification prior to submittal of a proposal.
- 5.13 Based on the required interaction process with the FCC and USAC, it is not possible to determine a definitive project start date – as it is dependent on approvals and posting where NETC has limited control.
- 5.14 Each Responding Vendor must name the project manager that Responding Vendor will assign to the project along with a description of the project manager's qualifications.
- 5.15 Responding Vendors are encouraged to provide professional references from similar projects, including: contact name, mailing address, phone number, and email address.
- 5.16 NETC reserves the right to seek clarification of each Proposal or to make an award without further discussion of the Proposals received. Therefore, it is important that each Proposal be organized and submitted in a clear and complete manner.
- 5.17 Each Responding Vendor must have a current FCC Registration Number (FRN). More information about obtaining an FRN can be found at <https://apps.fcc.gov/coresWeb/publicHome.do>.
- 5.18 Each Responding Vendor must have a current USAC 498 ID (also known as a Service Provider Identification Number (SPIN)). More information about obtaining the 498 ID can be found at <http://www.usac.org/sp/about/obtain-498ID/default.aspx>.
- 5.19 All materials submitted in response to the RFP become the property of NETC. If there is any concern about confidentiality, mark the appropriate pages of your response "Confidential." NETC will attempt to honor all reasonable requests for vendor confidentiality.
- 5.20 The Responding Vendor shall comply with all local, state, and federal laws and regulations related to the performance of the contract to the extent that the same may be applicable.
- 5.21 A Proposal may be rejected in whole or in part if it limits or modifies any terms and conditions and/or specifications of this RFP.
- 5.22 By responding, the Responding Vendor states that the Proposal is not made in connection with any competing Responding Vendor submitting a separate response to the RFP and is, in all aspects, fair and without collusion or fraud.
- 5.23 Any and all information provided to vendors by NETC or its sites, is considered to be proprietary information and must be used solely for the purpose of preparing the

proposal and is not to be released outside the Responding Vendor organization without written permission from NETC or its sites.

- 5.24 Responding Vendor shall list their experience with the FCC Rural Healthcare USF program and process.
- 5.25 In the event that Dark Fiber is requested in this RFP modulation equipment is not required unless explicitly requested in section 1.

6. Schedule

- 6.1 Proposals will be disqualified if an electronic copy, in either Microsoft Word or Portable Document Format (preferred), is not received prior to the Allowable Contract Selection Date (ACSD) listed on USAC's website; unless no other proposals are received. <https://rhc.usac.org/hcf/public/searchPosted.htm>
- 6.2 This RFP has been submitted with a 28-day competitive bidding period.
- 6.3 Proposals shall be submitted to RFP Administrator, HealthConnect Networks, by email at rfp@healthconnectnetworks.com.
- 6.4 Please indicate "NETC RFP-3153 Proposal" on the email subject line.

7. Authorized Negotiator

- 7.1 The proposal shall be signed by the person authorized to legally bind the proposal.
- 7.2 The proposal shall designate an authorized negotiator who shall be empowered to make binding commitments.

8. Responding Vendors Responsibility for Proposal Costs

- 8.1 The Responding Vendor shall be fully responsible for all proposal development and submittal costs. NETC assumes no contractual or financial obligation as a result of issuance of this RFP.

9. Compliance with Laws, Permits, Rules

- 9.1 The Successful Vendor shall comply with all rules, regulations, ordinances, codes and laws relating to the work or the conduct thereof and shall secure and pay for any permits and licenses necessary for the execution of the work.
- 9.2 The Successful Vendor shall be subject to the safety department's workplace rules at a given site.

10. Insurance

- 10.1 The Successful Vendor shall agree to maintain General Liability Insurance, Worker's Compensation and Employer's Liability Insurance, where applicable, to cover all its personnel engaged in the performance of the services herein described as well as damages arising as a result of the performance of such services.
- 10.2 The Successful Vendor further agrees to require its subcontractor(s), if any, to maintain General Liability Insurance, Worker's Compensation and Employer's Liability Insurance, where applicable. The amounts of such coverage shall be as reasonably determined by Successful Vendor.

10.3 Proof of policies shall be provided to NETC with proposal.

11. General Network Requirements

- 11.1 NETC invites Responding Vendors to bid on the whole network or individual sites, services, and/or facilities.
- 11.2 Private network solutions should provide any-to-any connectivity between sites over a common network platform through private tunnels. We anticipate responses that include Carrier Ethernet Services, MPLS/VPLS, and equivalent technologies. NETC anticipates these will be the most cost-effective technologies. If Carrier Ethernet Services are quoted, they should be MEF compliant including the service types discussed in MEF standards 5.1, 22.1, and 33.
- 11.3 WAN services should support an integrated QoS/CoS capability that can prioritize traffic based on DSCP marking and should support at least three customer accessible queues including a low latency queue.
- 11.4 NETC prefers that services be delivered over technology that provides for symmetrical bandwidth, except where specific requests for asymmetrical bandwidth may be noted.
- 11.5 Internet Services offered should be capable of supporting IPv4 and IPv6 and should include static IP addresses, as necessary and justified by each participating Health Care Provider (HCP).
- 11.6 Fiber (or equivalent) may be jumpered at any distributions point as necessary. Vendor will identify and document any re-transmitting or monitoring equipment, in the fiber (or equivalent) path.
- 11.7 Bandwidths listed for each particular HCP may indicate multiple bandwidth increments. The first (**bold**) is the minimum requirement. Responding Vendors shall provide pricing for all bandwidths listed for each HCP. If a carrier is unable to meet the requirement cost-effectively, it should respond with pricing for the maximum bandwidth it can provide.
- 11.8 Responding Vendor shall provide their operational expectations for the following network metrics, with the anticipation that these network metrics will become the basis for a Service Level Agreement to be negotiated with the Selected Vendor:
 - 11.8.1 Network Availability: Expressed as a percentage (in the form of ###.###%).
- 11.9 Site and Service Substitutions. Responding Vendor shall allow for Site and Service Substitutions pursuant to FCC 12-150 Rural Health Care Support Mechanism Appendix D (Final Rules), 47 C.F.R. § 54.646. The Responding Vendor shall allow NETC to add sites and/or upgrade, change, or relocate services through the length of the contract-term without having to rebid.

12. Service Level Agreement

- 12.1 Responding Vendor shall provide their operational expectations for the following network metrics, with the anticipation that these network metrics will become the basis for a Service Level Agreement.
- 12.2 Packet Delivery: Expressed in percentage (in the form of ###.###%) of packets the network is expected to deliver
- 12.3 Latency: Expressed in milliseconds for round trip time between any two HCPs

- 12.4 Jitter: Expressed in milliseconds between any two HCPs
- 12.5 Network Availability: Expressed as a percentage (in the form of ##.###%).
- 12.6 Response Time: Expressed in terms of initial trouble report response time in minutes and on-site response time in hours.
- 12.7 Planned Network Maintenance: Please indicate the standard notification Responding Vendor provides to customers for planned network maintenance. Responding Vendor should describe their standard network maintenance window.
- 12.8 Escalation Procedures: Responding Vendor should provide NOC initial point of contact and trouble escalation procedures.
- 12.9 Security Incidents: Responding Vendor shall list any programs and procedures in place specifically for monitoring and resolving security incidents.
- 12.10 Credit Allowances: Responding Vendor must provide a listing of the credit allowances and/or refunds that may be assessed based upon service outages. Responding Vendor should state the outage intervals and the refund amounts. For example, if service were unavailable for 30 minutes, state the refund amount. If service were unavailable for an hour, state the refund amount.
- 12.11 Responding vendor shall provide an SLA portal allowing NETC to monitor packet loss, latency, jitter, and availability for circuit(s) at each participant location.

13. Sites and Services

- 13.1 New England Telehealth Consortium is seeking services at the HCP participant locations listed in Appendix B.
- 13.2 The services/equipment to be provided is SD-WAN, WAN, and Internet.
- 13.3 **Network Diagram**: A current Network Diagram, along with proposed Network Diagrams are provided in Appendix A.
- 13.4 **NETC** (HCP# 17234) requires pricing for SD-WAN services, including underlying transport networks, shared network infrastructure, and equipment capable of providing Layer 2 and Layer 3 SD-WAN overlay networks. Specific requirements are outlined below:

Shared Network Infrastructure & CPE

- 13.5 NETC (HCP# 17234) requires dedicated internet access (or equivalent) at the following locations. Each internet connection should be provided over a physically diverse path to a geographically diverse location. Please include a map/diagram of the path.
 - 13.5.1 60 Summer St Bangor, ME 04401
 - 13.5.1.1 Option A – Direct connection
 - 13.5.1.2 Option B – Transport and DIA to a datacenter of the vendors choice, examples as follows (not exhaustive).
 - 13.5.1.2.1 9 Westland Ave, Portland, ME
 - 13.5.1.2.2 340 Cumberland Ave, Portland, ME
 - 13.5.1.2.3 14 Resilient Circle, Brunswick, ME
 - 13.5.2 16 Cavendish Court Lebanon, NH 03766

- 13.5.2.1 Option A – Direct connection
- 13.5.2.2 Option B – Transport and DIA to a datacenter of the vendors choice, examples as follows (not exhaustive).
 - 13.5.2.2.1 1 Summer St., Boston, MA
 - 13.5.2.2.2 400 Minuteman Rd, Andover, MA
 - 13.5.2.2.3 2 Prince Ave, Lowell, MA
 - 13.5.2.2.4 70 Innerbelt Rd., Somerville, MA
 - 13.5.2.2.5 1 Sundial Ave, Manchester, NH
 - 13.5.2.2.6 366 Pinnacle Ridge Rd. Rutland VT
- 13.5.3 Responding vendors should indicate their ability and willingness to support BGP (or equivalent). In addition, vendors must support the advertisement of multiple ASNs, including the NETC ASN and its members’ ASNs, out the internet connection. This is required since NETC peers with many of its members downstream and must be able to advertise their routes over the connection.
- 13.5.4 Responding vendors are invited to provide pricing for dedicated bandwidth options from **10 Gbps** symmetrical up to and including 100 Gbps Symmetrical for each location identified in section 13.5. Please provide pricing for fiber (or equivalent) handoff.
- 13.6 **NETC (HCP# 17234)** requires pricing for direct, private connectivity between NETC core locations and cloud providers including Amazon Web Services, Microsoft Azure, Oracle Cloud, and Google Cloud. (or equivalent) (See Cloud Provider Diagram, Page 44)
 - 13.6.1 Vendor shall provide pricing for all available symmetrical bandwidth increments from 30 Mbps to 10 Gbps
- 13.7 **NETC (HCP# 17234)** requires SD-WAN equipment that supports a carrier-grade SD-WAN architecture. This equipment must aggregate all customer traffic at two geographically diverse core locations (see section 13.5.1 and 13.5.2 above), with secure layer 3 overlay connections back to the core for all CPEs. The SD-WAN equipment must also support layer 2 overlays that provide a single broadcast domain per healthcare organization, ensuring isolated and secure communication between sites. The architecture shall operate over multiple transport networks, (see section 13.11 through 13.80 below) ensuring resilient and flexible connectivity. Additional requirements are as follows:
 - 13.7.1 Core and Customer Premise SD-WAN Equipment shall support:
 - 13.7.1.1 Secure layer 3 overlays back to the core locations. No split tunneling shall be used for Customer Premise Equipment (CPE)
 - 13.7.1.2 Dynamic routing with iBGP/eBGP for route advertisement and peering.
 - 13.7.1.3 Zero-touch provisioning and template-based configuration to streamline deployment and management.
 - 13.7.1.4 A secondary interface for layer 2 overlay, supporting VLAN tagging and bridging across sites.
 - 13.7.1.5 Segregation of layer 2 (site-to-site) and layer 3 (site-to-internet) traffic for optimized network performance.

- 13.7.1.6 Application-aware routing with dynamic bandwidth allocation, allowing the solution to prioritize traffic based on application type and importance.
- 13.7.1.7 Advanced QoS features to prioritize critical traffic and maintain performance.
- 13.7.1.8 Remote management capabilities with integration into a centralized SD-WAN orchestrator.
- 13.7.1.9 Real-time monitoring tools for quick troubleshooting and optimal operation.
- 13.7.1.10 Integrations for third-party security, monitoring, and management tools.
- 13.7.1.11 User and group-based policy enforcement with integration support for directory services such as Active Directory and LDAP.
- 13.7.1.12 Active-active/active-passive clustering for seamless failover and high-availability configurations
- 13.7.1.13 Core SD-WAN Appliances shall provide high throughput and low latency handling of aggregated traffic from multiple customer sites.
- 13.7.1.14 Advanced firewall functionality, including Layer 7 (L7) application-based policies for granular control of network traffic.
- 13.7.1.15 Customizable policies based on application characteristics, risk levels, and productivity tags.
- 13.7.1.16 Secure VPN connections and deep packet inspection (DPI) for threat detection.
- 13.7.1.17 HTTPS proxy, various SSL/TLS protocols, and Remote Access VPN connections.
- 13.7.1.18 Appliance shall incorporate Intrusion Prevention System (IPS) capabilities with support for customizable vulnerability profiles.
- 13.7.2 Scalability Requirements:
 - 13.7.2.1 The SD-WAN solution must be capable of scaling to accommodate future increases in network traffic, both in terms of bandwidth and the number of connected sites.
 - 13.7.2.2 The solution should support the integration of emerging technologies, such as 5G, to future-proof the network infrastructure.
- 13.7.3 Security Compliance:
 - 13.7.3.1 The SD-WAN solution must comply with all relevant industry standards and regulations, such as HIPAA for healthcare environments.
 - 13.7.3.2 The solution should include comprehensive security features, such as data encryption, secure authentication, and audit trails, to meet compliance requirements.

- 13.8 In alignment with the requirements outlined above, NETC (HCP# 17234) has identified specific equipment models and configurations that are expected to meet or exceed the performance and security standards necessary for a carrier-grade SD-WAN deployment. While the configuration details listed in this section refer to specific manufacturers' product offerings, NETC recognizes that there are multiple equipment providers capable of delivering equivalent solutions. The specifications herein do not indicate any preference for a given manufacturer, and all proposals will receive equal consideration and a fair evaluation, regardless of the manufacturer, brand, or product name.

13.8.1 Head end Platform

13.8.1.1 Qty 1 - Versa - Large Head End Platform (or Equivalent)

- 13.8.1.1.1 Large size Versa Head-End Platform for up to 2,500 CPEs for 3 years. Includes Concerto, Versa Message Server, Director, Controller and Analytics Fusion platforms Right to Use for the duration. (or Equivalent)

13.8.2 NETC Core Location - 60 Summer St Bangor, ME 04401

13.8.2.1 Qty 2 – Versa CSG 5000 (High Availability Pair) (or Equivalent)

- 13.8.2.1.1 Versa Cloud Services Gateway 5000 - 2RU Very High-Performance Network Appliance with built-in crypto and compression offload capabilities in hardware, 256GB DDR4 memory, 1TB storage, 16 x SFP28 25/10 GE and 4x QSFP28 100GE interfaces. (or Equivalent)

- 13.8.2.1.2 Please provide additional pricing for 3-year same day advance replacement support for the unit.

13.8.2.2 As an alternative, vendors are requested to provide pricing for a "Versa Certified Whitebox" (or equivalent) solution.

- 13.8.2.2.1 Specifications for the recommended Dell hardware (or equivalent), ensuring equivalent or better performance than the Versa Cloud Services Gateway 5000 (or equivalent).

- 13.8.2.2.2 Pricing for the Dell hardware (or equivalent), Versa OS software licensing (or equivalent), and any additional components required for a fully functional SD-WAN appliance (or equivalent).

- 13.8.2.2.3 Pricing for 3-year same-day advance replacement support for the hardware.

13.8.3 NETC Core Location - 16 Cavendish Court Lebanon, NH 03766

13.8.3.1 Qty 2 – Versa CSG 5000 (High Availability Pair) (or Equivalent)

- 13.8.3.1.1 Versa Cloud Services Gateway 5000 - 2RU Very High-Performance Network Appliance with built-in crypto and compression offload capabilities in hardware, 256GB DDR4 memory, 1TB storage, 16 x SFP28 25/10 GE and 4x QSFP28 100GE interfaces. (or Equivalent)

- 13.8.3.1.2 Please provide additional pricing for 3-year same day advance replacement support for the unit. (or Equivalent)
- 13.8.3.2 As an alternative, vendors are requested to provide pricing for a "Versa Certified Whitebox" (or equivalent) solution.
 - 13.8.3.2.1 Specifications for the recommended Dell hardware (or equivalent), ensuring equivalent or better performance than the Versa Cloud Services Gateway 5000 (or equivalent).
 - 13.8.3.2.2 Pricing for the Dell hardware (or equivalent), Versa OS software licensing (or equivalent), and any additional components required for a fully functional SD-WAN appliance (or equivalent).
 - 13.8.3.2.3 Pricing for 3-year same-day advance replacement support for the hardware.
- 13.8.4 NETC Participant Sites
 - 13.8.4.1 Qty 200 - Versa CSG750 (or Equivalent)
 - 13.8.4.1.1 Cloud Services Gateway 750 - Desktop / 1RU Network Appliance (or Equivalent)
 - 13.8.4.1.2 Please provide additional pricing for Versa Prime Secure SD-WAN (100 Mbps & 500 Mbps) 3YR subscription & Versa Premier Secure SD-WAN (100 Mbps & 500 Mbps) 3YR subscription (or Equivalent)
 - 13.8.4.2 Qty 200 – Versa CSG770 (or Equivalent)
 - 13.8.4.2.1 Cloud Gateway 770 - Desktop / 1RUNetwork Appliance (or Equivalent)
 - 13.8.4.2.2 Please provide additional pricing for Versa Prime Secure SD-WAN (500 Mbps & 1 Gbps) 3YR subscription & Versa Premier Secure SD-WAN (500Mbps & 1Gbps) 3YR subscription (or Equivalent)
 - 13.8.4.3 Qty 65 – Versa CSG1500 (or Equivalent)
 - 13.8.4.3.1 Cloud Services Gateway 1500 - 1RU Network Appliance based on high core count high performance x86 processor, with built-in crypto and compression capabilities in hardware, 32GB ECC memory, 256 GB storage, 2x10G/5G/2.5G/1G (or Equivalent)
 - 13.8.4.3.2 Please provide additional pricing for Versa Prime Secure SD-WAN (1 Gbps & 2 Gbps) 3YR subscription & Versa Premier Secure SD-WAN (1 Gbps & 2 Gbps) 3YR subscription (or Equivalent)
 - 13.8.4.4 Qty 15 - Versa CSG2500 (or Equivalent)
 - 13.8.4.4.1 Versa Cloud Services Gateway 2500 - 1RU Very High-Performance Network Appliance with built-in crypto and compression offload capabilities in

hardware, 96GB DDR4 memory, 1TB storage, 8 x 1GbE RJ45 & 8 x SFP+ 10GE interfaces, 1x Management (or Equivalent)

- 13.8.4.4.2 Please provide additional pricing for Versa Prime Secure SD-WAN (5 Gbps & 10 Gbps) 3YR subscription & Versa Premier Secure SD-WAN (5 Gbps & 10 Gbps) 3YR subscription (or Equivalent)

Transport Networks

Current Bandwidth	Number of Sites
3	5
5	5
10	19
20	11
30	32
50	56
100	86
200	24
500	24
1000	48
2000	3
5000	2
10000	1

- 13.9 Vendors should acknowledge and understand that the majority of the network traffic associated with this solution is intrastate in nature. Any considerations related to Universal Service Fund (USF) fees should be factored into the proposed solution and pricing.
- 13.10 **NETC** (HCP# 17234) requires a Carrier Ethernet Service (CES) **E-Line**, or equivalent, connection between each NETC core location listed below and each participant location (See Page 43). Additional requirements are as follows:
- 13.10.1 E-Lines (or equivalent) shall be aggregated together using 802.1Q, Ethernet Virtual Private Line (EVP-Line) (or equivalent)
- 13.10.2 E-Lines (or equivalent) shall be handed off to NETC core locations via Multimode Fiber, 10GBASE-SR (or equivalent).
- 13.10.3 E-Lines (or equivalent) shall have an MTU size of 1582 or greater.
- 13.10.4 NETC requires a logical connection between each of the NETC core locations. For each 10 Gbps handoff delivering the site E-Line circuits (or equivalent) to the core, a 1 Gbps E-Line (or equivalent) is required.
- 13.10.5 NETC requires that vendor provides diverse entrances for the 10Gb circuits to the NETC core locations. For example, if 8 – 10Gbps core circuits are required, then 4 should be diverse from the other 4. (or equivalent)
- 13.10.6 The total bandwidth of the 10Gbps handoffs (or equivalent) to each NETC core location shall be equal to or greater than the sum of the bandwidth of

all site circuits. This is to meet the NETC requirement of no-oversubscription between the sites and the cores.

13.10.7 The core location addresses are as follows:

13.10.7.1 Bangor Core – 41 Pleasant St. Bangor, ME 04401

13.10.7.2 Lebanon Core - 16 Cavendish Court Lebanon, NH 03766

13.11 **NETC** (HCP# 17234) requires a Carrier Ethernet Service (CES) **E-LAN** or equivalent, connection to each participant location and each core location (See Page 44).

Additional requirements are as follows:

13.11.1 E-LANs shall be aggregated together using 802.1Q, Ethernet Virtual Private LAN (EVP-LAN) (or equivalent)

13.11.2 E-LANs shall be handed off to NETC cores locations via Multimode Fiber 10GBASE-SR (LAG optional), 100GBASE-SR4, 100GBASE-SR10 (or equivalent).

13.11.3 NETC core location EPV-LAN (or equivalent) bandwidths shall be equal to the sum of the Healthcare Organizations participant bandwidths.

13.11.4 NETC requires an MTU size of 1582 or greater.

13.11.5 The total bandwidth of the 10Gbps (LAG optional) or 100 Gbps handoffs (or equivalent) to each NETC core location shall be equal to or greater than the sum of the bandwidth of all site circuits. This is to meet the NETC requirement of no-oversubscription between the sites and the cores.

13.11.6 The core location addresses are as follows:

13.11.6.1 Bangor Core – 41 Pleasant St. Bangor, ME 04401

13.11.6.2 Lebanon Core - 16 Cavendish Court Lebanon, NH 03766

13.12 **NETC** (HCP# 17234) requires Internet Access (or equivalent) as follows at each participant location in Appendix B.

13.12.1 Dedicated Internet Access - Vendor shall provide pricing for all available symmetrical bandwidth increments from 10 Mbps to 10.0 Gbps.

13.12.2 Fiber to the Premises (FTTP) - Vendor shall provide pricing for all available symmetrical bandwidth increments from 10 Mbps to 10.0 Gbps.

13.12.3 Cellular 4G/5G - Vendor shall provide pricing and coverage details for 4G/5G cellular internet services, including available bandwidth options and any associated equipment costs.

13.12.4 Satellite - Vendor shall provide pricing and details for satellite internet services, including available bandwidth options and any associated equipment costs.

13.12.5 Asymmetrical Connections (DSL/DOCSIS) - Vendor shall provide pricing for all available asymmetrical internet connections, such as DSL or cable, detailing available bandwidth options and service levels.

13.13 **Ammonoosuc Community Health Services** (HCP# 14540) requires one or more Layer 2 service(s) (or equivalent) connecting all of the following locations to the NETC cores (13.5.1 & 13.5.2)

13.13.1 **Ammonoosuc Community Health Services** (HCP# 14540)

13.13.1.1 Vendor shall provide pricing for all available symmetrical bandwidth increments from **200 Mbps** to 500 Mbps

- 13.13.2 **Franconia** (HCP# 23644)
 - 13.13.2.1 Vendor shall provide pricing for all available symmetrical bandwidth increments from **100 Mbps** to 500 Mbps
- 13.13.3 **Secured Network Services** (HCP# 71683)
 - 13.13.3.1 Vendor shall provide pricing for all available symmetrical bandwidth increments from **500 Mbps** to 1 Gbps
- 13.13.4 **Warren** (HCP# 23775)
 - 13.13.4.1 Vendor shall provide pricing for all available symmetrical bandwidth increments from **100 Mbps** to 500 Mbps
- 13.13.5 **Whitefield** (HCP# 45801)
 - 13.13.5.1 Vendor shall provide pricing for all available symmetrical bandwidth increments from **100 Mbps** to 200 Mbps
- 13.13.6 **Woodsville** (HCP# 23799)
 - 13.13.6.1 Vendor shall provide pricing for all available symmetrical bandwidth increments from **100 Mbps** to 500 Mbps
- 13.14 **Androscoggin Valley Page Hill Road** (HCP# 23560) requires one or more Layer 2 service(s) (or equivalent) connecting all of the following locations to the NETC cores (13.5.1 & 13.5.2)
 - 13.14.1 **Page Hill Road** (HCP# 23560)
 - 13.14.1.1 Vendor shall provide pricing for all available symmetrical bandwidth increments from **1 Gbps** to 5 Gbps
 - 13.14.2 **Weeks ENT** (HCP# 23672)
 - 13.14.2.1 Vendor shall provide pricing for all available symmetrical bandwidth increments from **10 Mbps** to 200 Mbps
 - 13.14.3 **Lab Broadway St.** (HCP# 23647)
 - 13.14.3.1 Vendor shall provide pricing for all available symmetrical bandwidth increments from **10 Mbps** to 200 Mbps
 - 13.14.4 **UCVH ASA** (HCP# 28513)
 - 13.14.4.1 Vendor shall provide pricing for all available symmetrical bandwidth increments from **10 Mbps** to 200 Mbps
 - 13.14.5 **Saco River Medical Group – Glen** (HCP# 50127)
 - 13.14.5.1 Vendor shall provide pricing for all available symmetrical bandwidth increments from **10 Mbps** to 200 Mbps
 - 13.14.6 **North Country Healthcare Physical Therapy** (HCP# 69828)
 - 13.14.6.1 Vendor shall provide pricing for all available symmetrical bandwidth increments from **200 Mbps** to 500 Mbps
 - 13.14.7 **Administrations** (HCP# 70730)
 - 13.14.7.1 Vendor shall provide pricing for all available symmetrical bandwidth increments from **200 Mbps** to 500 Mbps
 - 13.14.8 **Pulmonary, Sleep, and ENT Clinics** (HCP# 23648)
 - 13.14.8.1 Vendor shall provide pricing for all available symmetrical bandwidth increments from **10 Mbps** to 200 Mbps
 - 13.14.9 **NCH Outreach Clinics** (HCP# 68314)
 - 13.14.9.1 Vendor shall provide pricing for all available symmetrical bandwidth increments from **100 Mbps** to 200 Mbps

- 13.15 **Brattleboro Memorial Hospital** (HCP# 23574) requires one or more Layer 2 service(s) (or equivalent) connecting all of the following locations to the NETC cores (13.5.1 & 13.5.2)
 - 13.15.1 **Brattleboro Family Healthcare** (HCP# 26417)
 - 13.15.1.1 Vendor shall provide pricing for all available symmetrical bandwidth increments from **5 Mbps** to 200 Mbps
 - 13.15.2 **Brattleboro Memorial Hospital** (HCP# 23574)
 - 13.15.2.1 Vendor shall provide pricing for all available symmetrical bandwidth increments from **100 Mbps** to 200 Mbps
 - 13.15.3 **Putney Family Medicine** (HCP# 28514)
 - 13.15.3.1 Vendor shall provide pricing for all available symmetrical bandwidth increments from **10 Mbps** to 200 Mbps
- 13.16 **Brattleboro Retreat** (HCP# 23575) requires one or more Layer 2 service(s) (or equivalent) connecting all of the following locations to the NETC cores (13.5.1 & 13.5.2)
 - 13.16.1 **Brattleboro Retreat** (HCP# 23575)
 - 13.16.1.1 Vendor shall provide pricing for all available symmetrical bandwidth increments from **100 Mbps** to 500 Mbps
- 13.17 **Calais Regional Hospital** (HCP# 23595) requires one or more Layer 2 service(s) (or equivalent) connecting all of the following locations to the NETC cores (13.5.1 & 13.5.2)
 - 13.17.1 **Calais Regional Hospital** (HCP# 23595)
 - 13.17.1.1 Vendor shall provide pricing for all available symmetrical bandwidth increments from **1000 Mbps** to 5 Gbps
- 13.18 **Cary Medical Center** (HCP# 10940) requires one or more Layer 2 service(s) (or equivalent) connecting all of the following locations to the NETC cores (13.5.1 & 13.5.2)
 - 13.18.1 **Kimball Community Health Center** (HCP# 28572)
 - 13.18.1.1 Vendor shall provide pricing for all available symmetrical bandwidth increments from **30 Mbps** to 200 Mbps
 - 13.18.2 **Cary Medical Center** (HCP# 10940)
 - 13.18.2.1 Vendor shall provide pricing for all available symmetrical bandwidth increments from **500 Mbps** to 1 Gbps
 - 13.18.2.2 Please provide additional pricing for a diverse **500 Mbps** to 1 Gbps circuit.
 - 13.18.3 **Pines Ophthalmology** (HCP# 26442)
 - 13.18.3.1 Vendor shall provide pricing for all available symmetrical bandwidth increments from **30 Mbps** to 200 Mbps
 - 13.18.4 **Pines Caribou Health Center** (HCP# 26441)
 - 13.18.4.1 Vendor shall provide pricing for all available symmetrical bandwidth increments from **100 Mbps** to 200 Mbps
 - 13.18.5 **Pines Presque Isle FHC** (HCP# 26490)
 - 13.18.5.1 Vendor shall provide pricing for all available symmetrical bandwidth increments from **100 Mbps** to 200 Mbps
 - 13.18.6 **Cary Medical Center St. John Valley Health Center** (HCP# 26525)

- 13.18.6.1 Vendor shall provide pricing for all available symmetrical bandwidth increments from **100 Mbps** to 200 Mbps
- 13.18.7 **Pines Washburn Health Center** (HCP# 28573)
 - 13.18.7.1 Vendor shall provide pricing for all available symmetrical bandwidth increments from **30 Mbps** to 200 Mbps
- 13.19 **Catholic Medical Center** (HCP# 23692) requires one or more Layer 2 service(s) (or equivalent) connecting all of the following locations to the NETC cores (13.5.1 & 13.5.2)
 - 13.19.1 **Catholic Medical Center** (HCP# 23692)
 - 13.19.1.1 Vendor shall provide pricing for all available symmetrical bandwidth increments from **1000 Mbps** to 1 Gbps
 - 13.19.2 **Cholesterol Management Center** – 6 Tsienneto Rd, Derry, NH
 - 13.19.2.1 Vendor shall provide pricing for all available symmetrical bandwidth increments from **100 Mbps** to 200 Mbps
 - 13.19.3 **Granite State Internal Medicine** – 188 Rt 101, Bedford, NH
 - 13.19.3.1 Vendor shall provide pricing for all available symmetrical bandwidth increments from **100 Mbps** to 200 Mbps
 - 13.19.4 **Goffstown Family Practice** – 17A Tatro Drive, Ste 201, Goffstown, NH
 - 13.19.4.1 Vendor shall provide pricing for all available symmetrical bandwidth increments from **100 Mbps** to 200 Mbps
 - 13.19.5 **Highlander Way Int Med** – 1 Highlander Way, Ste 4, Manchester, NH
 - 13.19.5.1 Vendor shall provide pricing for all available symmetrical bandwidth increments from **100 Mbps** to 200 Mbps
 - 13.19.6 **Health Care for the Homeless** – 199 Manchester St., Manchester, NH
 - 13.19.6.1 Vendor shall provide pricing for all available symmetrical bandwidth increments from **100 Mbps** to 200 Mbps
 - 13.19.7 **Hooksett Medical** – 27 Londonderry Turnpike, Hooksett, NH
 - 13.19.7.1 Vendor shall provide pricing for all available symmetrical bandwidth increments from **100 Mbps** to 200 Mbps
 - 13.19.8 **Hooksett Internal Medicine** – 11 Kimball Dr, Hooksett, NH
 - 13.19.8.1 Vendor shall provide pricing for all available symmetrical bandwidth increments from **100 Mbps** to 200 Mbps
 - 13.19.9 **NEHVI** – 166 Kinsley St., Nashua, NH
 - 13.19.9.1 Vendor shall provide pricing for all available symmetrical bandwidth increments from **30 Mbps** to 200 Mbps
 - 13.19.10 **Family Physicians** - 57 Webster St, Ste 110, Manchester, NH
 - 13.19.10.1 Vendor shall provide pricing for all available symmetrical bandwidth increments from **100 Mbps** to 200 Mbps
 - 13.19.11 **Wilson Street Integrated Health** – 293 Wilson St, Manchester, NH
 - 13.19.11.1 Vendor shall provide pricing for all available symmetrical bandwidth increments from **100 Mbps** to 200 Mbps
 - 13.19.12 **CMC Physical Therapy of Goffstown** – 558 Mast Road, Goffstown NH
 - 13.19.12.1 Vendor shall provide pricing for all available symmetrical bandwidth increments from **30 Mbps** to 200 Mbps

- 13.20 **Community Health Access Network** (HCP# 34350) requires one or more Layer 2 service(s) (or equivalent) connecting all of the following locations to the NETC cores (13.5.1 & 13.5.2)
- 13.20.1 **Lamprey Health Care, Nashua** (HCP# 42487)
 - 13.20.1.1 Vendor shall provide pricing for all available symmetrical bandwidth increments from **20 Mbps** to 200 Mbps
 - 13.20.2 **Lamprey Health Care/207 S. Main St. Newmarket** (HCP# 34350)
 - 13.20.2.1 Vendor shall provide pricing for all available symmetrical bandwidth increments from **100 Mbps** to 200 Mbps
 - 13.20.3 **CHAN, Portsmouth, BC/DR Location** (HCP# 34351)
 - 13.20.3.1 Vendor shall provide pricing for all available symmetrical bandwidth increments from **100 Mbps** to 200 Mbps
- 13.21 **Cheshire Medical Center** (HCP# 23665) requires one or more Layer 2 service(s) (or equivalent) connecting all of the following locations to the NETC cores (13.5.1 & 13.5.2)
- 13.21.1 **Dartmouth-Hitchcock Keene- Doorway** (HCP# 32892)
 - 13.21.1.1 Vendor shall provide pricing for all available symmetrical bandwidth increments from **30 Mbps** to 200 Mbps
 - 13.21.2 **Dartmouth Hitchcock Keene Dermatology** (HCP# 26462)
 - 13.21.2.1 Vendor shall provide pricing for all available symmetrical bandwidth increments from **50 Mbps** to 1 Gbps
 - 13.21.3 **Pulmonary & Rheumatology Svc –** (HCP# 28519)
 - 13.21.3.1 Vendor shall provide pricing for all available symmetrical bandwidth increments from **30 Mbps** to 200 Mbps
 - 13.21.4 **Dartmouth-Hitchcock Keene- Geriatric Care** (HCP# 42486)
 - 13.21.4.1 Vendor shall provide pricing for all available symmetrical bandwidth increments from **30 Mbps** to 200 Mbps
 - 13.21.5 **Optical Shop and Walk In Care at Colony Mill** (HCP# 26463)
 - 13.21.5.1 Vendor shall provide pricing for all available symmetrical bandwidth increments from **100 Mbps** to 200 Mbps
 - 13.21.6 **Cheshire Medical Center** (HCP# 23665)
 - 13.21.6.1 Vendor shall provide pricing for all available symmetrical bandwidth increments from **1 Gbps** to 5 Gbps
 - 13.21.7 **Dartmouth-Hitchcock Keene- Walpole** (HCP# 26527)
 - 13.21.7.1 Vendor shall provide pricing for all available symmetrical bandwidth increments from **100 Mbps** to 500 Mbps
 - 13.21.8 **Dartmouth-Hitchcock Keene- Winchester** (HCP# 26540)
 - 13.21.8.1 Vendor shall provide pricing for all available symmetrical bandwidth increments from **30 Mbps** to 200 Mbps
 - 13.21.9 **Dartmouth-Hitchcock Keene- Maple Avenue** (HCP# 103291)
 - 13.21.9.1 Vendor shall provide pricing for all available symmetrical bandwidth increments from **100 Mbps** to 500 Mbps
 - 13.21.10
- 13.22 **Rutland Region Community Health Center** (HCP# 26495) requires one or more Layer 2 service(s) (or equivalent) connecting all of the following locations to the NETC cores (13.5.1 & 13.5.2)

- 13.22.1 **Castleton Family Health Center** (HCP# 14222)
 - 13.22.1.1 Vendor shall provide pricing for all available symmetrical bandwidth increments from **100 Mbps** to 500 Mbps
- 13.22.2 **Brandon Medical Center** (HCP# 14221)
 - 13.22.2.1 Vendor shall provide pricing for all available symmetrical bandwidth increments from **100 Mbps** to 500 Mbps
- 13.22.3 **Cerner Data Center** (HCP# 61201)
 - 13.22.3.1 Vendor shall provide pricing for all available symmetrical bandwidth increments from **1 Gbps** to 5 Gbps
- 13.22.4 **Pediatrics** (HCP# 35263)
 - 13.22.4.1 Vendor shall provide pricing for all available symmetrical bandwidth increments from **100 Mbps** to 500 Mbps
- 13.22.5 **Rutland Community Health Center-Stratton Rd** (HCP# 14213)
 - 13.22.5.1 Vendor shall provide pricing for all available symmetrical bandwidth increments from **100 Mbps** to 500 Mbps
- 13.22.6 **Shorewell Community Health Center** (HCP# 40435)
 - 13.22.6.1 Vendor shall provide pricing for all available symmetrical bandwidth increments from **50 Mbps** to 200 Mbps
- 13.22.7 **Mettowee Valley Family Health Center** (HCP# 23783)
 - 13.22.7.1 Vendor shall provide pricing for all available symmetrical bandwidth increments from **50 Mbps** to 200 Mbps
- 13.22.8 **Rutland Region Community Health Center** (HCP# 26495)
 - 13.22.8.1 Vendor shall provide pricing for all available symmetrical bandwidth increments from **200 Mbps** to 500 Mbps
- 13.22.9 **Community Health North – 213 North Main St., Rutland, VT**
 - 13.22.9.1 Vendor shall provide pricing for all available symmetrical bandwidth increments from **100 Mbps** to 500 Mbps
- 13.23 **Copley Hospital** (HCP# 10626) requires one or more Layer 2 service(s) (or equivalent) connecting all of the following locations to the NETC cores (13.5.1 & 13.5.2)
 - 13.23.1 **Copley Hospital** (HCP# 10626)
 - 13.23.1.1 Vendor shall provide pricing for all available symmetrical bandwidth increments from **1 Gbps** to 5 Gbps
- 13.24 **Cottage Hospital** (HCP# 11069) requires one or more Layer 2 service(s) (or equivalent) connecting all of the following locations to the NETC cores (13.5.1 & 13.5.2)
 - 13.24.1 **Cottage Hospital** (HCP# 11069)
 - 13.24.1.1 Vendor shall provide pricing for all available symmetrical bandwidth increments from **50 Mbps** to 200 Mbps
- 13.25 **Counseling Service of Addison County** (HCP# 26470) requires one or more Layer 2 service(s) (or equivalent) connecting all of the following locations to the NETC cores (13.5.1 & 13.5.2)
 - 13.25.1 **Counseling Service of Addison County** (HCP# 26470)
 - 13.25.1.1 Vendor shall provide pricing for all available symmetrical bandwidth increments from **200 Mbps** to 500 Mbps
 - 13.25.2 **Counseling Service of Addison County - Main Street** (HCP# 26471)

- 13.25.2.1 Vendor shall provide pricing for all available symmetrical bandwidth increments from **100 Mbps** to 200 Mbps
- 13.26 **St. Joseph Hospital** (HCP# 23549) requires one or more Layer 2 service(s) (or equivalent) connecting all of the following locations to the NETC cores (13.5.1 & 13.5.2)
 - 13.26.1 **St. Joseph Healthcare Park** (HCP# 23548)
 - 13.26.1.1 Vendor shall provide pricing for all available symmetrical bandwidth increments from **100 Mbps** to 500 Mbps
 - 13.26.2 **St. Joseph Hospital** (HCP# 23549)
 - 13.26.2.1 Vendor shall provide pricing for all available symmetrical bandwidth increments from **1 Gbps** to 5 Gbps
 - 13.26.3 **Data Center** (HCP# 60213)
 - 13.26.3.1 Vendor shall provide pricing for all available symmetrical bandwidth increments from **1 Gbps** to 5 Gbps
 - 13.26.4 **St. Mary's Regional Medical Center** (HCP# 34355)
 - 13.26.4.1 Vendor shall provide pricing for all available symmetrical bandwidth increments from **1 Gbps** to 5 Gbps
 - 13.26.5 **Family Medicine** – 700 Mt. Hope Ave, Ste 210, Bangor, ME
 - 13.26.5.1 Vendor shall provide pricing for all available symmetrical bandwidth increments from **10 Mbps** to 500 Mbps
 - 13.26.6 **St. Joseph Hospital** (HCP# 26479)
 - 13.26.6.1 Vendor shall provide pricing for all available symmetrical bandwidth increments from **1 Gbps** to 5 Gbps
 - 13.26.7 **Poland Health Center** (HCP# 34356)
 - 13.26.7.1 Vendor shall provide pricing for all available symmetrical bandwidth increments from **20 Mbps** to 500 Mbps
- 13.27 **Coos County Family Health Services** (HCP# 23562) requires one or more Layer 2 service(s) (or equivalent) connecting all of the following locations to the NETC cores (13.5.1 & 13.5.2)
 - 13.27.1 **Coos County Family Health Services** (HCP# 23562)
 - 13.27.1.1 Vendor shall provide pricing for all available symmetrical bandwidth increments from **500 Mbps** to 1 Gbps
 - 13.27.2 **Coos County Family Health Services - 73 Main** (HCP# 50540)
 - 13.27.2.1 Vendor shall provide pricing for all available symmetrical bandwidth increments from **10 Mbps** to 500 Mbps
 - 13.27.3 **Coos County Family Health Services – Gorham** (HCP# 23650)
 - 13.27.3.1 Vendor shall provide pricing for all available symmetrical bandwidth increments from **50 Mbps** to 500 Mbps
 - 13.27.4 **Page Hill** (HCP# 23563)
 - 13.27.4.1 Vendor shall provide pricing for all available symmetrical bandwidth increments from **50 Mbps** to 500 Mbps
 - 13.27.5 **Coos County Family Health Services – Admin** (HCP# 23564)
 - 13.27.5.1 Vendor shall provide pricing for all available symmetrical bandwidth increments from **50 Mbps** to 500 Mbps
 - 13.27.6 **Coos County Family Health Services** - 120 Main Street 5C, Colebrook NH

- 13.27.6.1 Vendor shall provide pricing for all available symmetrical bandwidth increments from **50 Mbps** to 500 Mbps
- 13.27.7 **Coos County Family Health Services** - 141 Corliss Lane, Colebrook, NH
 - 13.27.7.1 Vendor shall provide pricing for all available symmetrical bandwidth increments from **50 Mbps** to 500 Mbps
- 13.27.8 **Coos County Family Health Services** (HCP# 115184)
 - 13.27.8.1 Vendor shall provide pricing for all available symmetrical bandwidth increments from **50 Mbps** to 500 Mbps
- 13.27.9 **Coos County Family Health Services** - 6 First Street (HCP# 115187)
 - 13.27.9.1 Vendor shall provide pricing for all available symmetrical bandwidth increments from **50 Mbps** to 500 Mbps
- 13.28 **Dartmouth-Hitchcock Medical Center** (HCP# 10271) requires one or more Layer 2 service(s) (or equivalent) connecting all of the following locations to the NETC cores (13.5.1 & 13.5.2)
 - 13.28.1 **Dartmouth-Hitchcock Medical Center** (HCP# 10271)
 - 13.28.1.1 Vendor shall provide pricing for all available symmetrical bandwidth increments from **100 Mbps** to 500 Mbps
- 13.29 **Down East Community Hospital** (HCP# 23686) requires one or more Layer 2 service(s) (or equivalent) connecting all of the following locations to the NETC cores (13.5.1 & 13.5.2)
 - 13.29.1 **Down East Community Hospital** (HCP# 23686)
 - 13.29.1.1 Vendor shall provide pricing for all available symmetrical bandwidth increments from **1 Gbps** to 5 Gbps
 - 13.29.1.2 Please provide additional pricing for a diverse **1 Gbps** to 5 Gbps circuit.
 - 13.29.2 **Rural Health Clinic** – 1031 Main St., East Machias, ME
 - 13.29.2.1 Vendor shall provide pricing for all available symmetrical bandwidth increments from **50 Mbps** to 500 Mbps
 - 13.29.3 **Arnold Memorial Medical Center** (HCP# 36144)
 - 13.29.3.1 Vendor shall provide pricing for all available symmetrical bandwidth increments from **50 Mbps** to 500 Mbps
 - 13.29.4 **Reid Emery Medical** (HCP# 32421)
 - 13.29.4.1 Vendor shall provide pricing for all available symmetrical bandwidth increments from **50 Mbps** to 500 Mbps
 - 13.29.5 **Milbridge Medical Center** (HCP# 23693)
 - 13.29.5.1 Vendor shall provide pricing for all available symmetrical bandwidth increments from **50 Mbps** to 500 Mbps
 - 13.29.6 **Rehabilitation** – 76 Dublin St. Machias, ME
 - 13.29.6.1 Vendor shall provide pricing for all available symmetrical bandwidth increments from **50 Mbps** to 500 Mbps
- 13.30 **Eastport Health Care** (HCP# 26451) requires one or more Layer 2 service(s) (or equivalent) connecting all of the following locations to the NETC cores (13.5.1 & 13.5.2)
 - 13.30.1 **Eastport Health Care** (HCP# 26451)
 - 13.30.1.1 Vendor shall provide pricing for all available symmetrical bandwidth increments from **200 Mbps** to 500 Mbps

- 13.30.2 **Eastport Health Care Machias** (HCP# 26468)
 - 13.30.2.1 Vendor shall provide pricing for all available symmetrical bandwidth increments from **200 Mbps** to 500 Mbps
- 13.31 **Fish River Rural Health** (HCP# 17159) requires one or more Layer 2 service(s) (or equivalent) connecting all of the following locations to the NETC cores (13.5.1 & 13.5.2)
 - 13.31.1 **Fish River Rural Health - Eagle Lake Health Center** (HCP# 17159)
 - 13.31.1.1 Vendor shall provide pricing for all available symmetrical bandwidth increments from **20 Mbps** to 500 Mbps
 - 13.31.2 **Fish River Rural Health - Fort Kent Dental** (HCP# 46163)
 - 13.31.2.1 Vendor shall provide pricing for all available symmetrical bandwidth increments from **10 Mbps** to 500 Mbps
 - 13.31.3 **Fish River Rural Health - Fort Kent** (HCP# 23639)
 - 13.31.3.1 Vendor shall provide pricing for all available symmetrical bandwidth increments from **5 Mbps** to 500 Mbps
 - 13.31.4 **Fish River Rural Hlth Madawaska** – 309 St. Thomas Rd, Madawaska, ME
 - 13.31.4.1 Vendor shall provide pricing for all available symmetrical bandwidth increments from **10 Mbps** to 500 Mbps
- 13.32 **Gifford Medical Center** (HCP# 14771) requires one or more Layer 2 service(s) (or equivalent) connecting all of the following locations to the NETC cores (13.5.1 & 13.5.2)
 - 13.32.1 **Gifford Medical Center** (HCP# 14771)
 - 13.32.1.1 Vendor shall provide pricing for all available symmetrical bandwidth increments from **500 Mbps** to 1 Gbps
 - 13.32.1.2 Please provide additional pricing for a diverse **500 Mbps** to 1 Gbps circuit.
 - 13.32.2 **Gifford Medical Center at Berlin** (HCP# 27487)
 - 13.32.2.1 Vendor shall provide pricing for all available symmetrical bandwidth increments from **50 Mbps** to 500 Mbps
 - 13.32.3 **Gifford Health Center at Berlin** (HCP# 47443)
 - 13.32.3.1 Vendor shall provide pricing for all available symmetrical bandwidth increments from **50 Mbps** to 500 Mbps
 - 13.32.4 **Chelsea Health Center** (HCP# 28521)
 - 13.32.4.1 Vendor shall provide pricing for all available symmetrical bandwidth increments from **50 Mbps** to 500 Mbps
 - 13.32.5 **Kingwood Health Center** (HCP# 27451)
 - 13.32.5.1 Vendor shall provide pricing for all available symmetrical bandwidth increments from **50 Mbps** to 500 Mbps
 - 13.32.6 **Rochester Health Center** (HCP# 28524)
 - 13.32.6.1 Vendor shall provide pricing for all available symmetrical bandwidth increments from **50 Mbps** to 500 Mbps
 - 13.32.7 **Sharon Health Center** (HCP# 18200)
 - 13.32.7.1 Vendor shall provide pricing for all available symmetrical bandwidth increments from **50 Mbps** to 500 Mbps
 - 13.32.8 **Twin River Urology** (HCP# 28526)

- 13.32.8.1 Vendor shall provide pricing for all available symmetrical bandwidth increments from **50 Mbps** to 500 Mbps
- 13.33 **Harrington Family Center** (HCP# 27253) requires one or more Layer 2 service(s) (or equivalent) connecting all of the following locations to the NETC cores (13.5.1 & 13.5.2)
 - 13.33.1 **Harrington Family Center** (HCP# 27253)
 - 13.33.1.1 Vendor shall provide pricing for all available symmetrical bandwidth increments from **100 Mbps** to 500 Mbps
- 13.34 **Health First Family Care Center – Franklin** (HCP# 26456) requires one or more Layer 2 service(s) (or equivalent) connecting all of the following locations to the NETC cores (13.5.1 & 13.5.2)
 - 13.34.1 **Health First Family Care Center – Franklin** (HCP# 26456)
 - 13.34.1.1 Vendor shall provide pricing for all available symmetrical bandwidth increments from **500 Mbps** to 1 Gbps
 - 13.34.2 **Health First FHC – Laconia Site** (HCP# 26465)
 - 13.34.2.1 Vendor shall provide pricing for all available symmetrical bandwidth increments from **500 Mbps** to 1 Gbps
 - 13.34.3 **SUD/MAT Services** (HCP# 95553)
 - 13.34.3.1 Vendor shall provide pricing for all available symmetrical bandwidth increments from **100 Mbps** to 1 Gbps
 - 13.34.4 **HealthFirst/Church St.** (HCP# 115779)
 - 13.34.4.1 Vendor shall provide pricing for all available symmetrical bandwidth increments from **500 Mbps** to 1 Gbps
 - 13.34.5 **HealthFirst/Mascoma - 18 Roberts Road, Canaan, ME**
 - 13.34.5.1 Vendor shall provide pricing for all available symmetrical bandwidth increments from **500 Mbps** to 1 Gbps
- 13.35 **HealthReach Community Health Centers/Hathaway Creative Ctr** (HCP# 26531) requires one or more Layer 2 service(s) (or equivalent) connecting all of the following locations to the NETC cores (13.5.1 & 13.5.2)
 - 13.35.1 **Hathaway Creative Ctr** (HCP# 26531)
 - 13.35.1.1 Vendor shall provide pricing for all available symmetrical bandwidth increments from **100 Mbps** to 500 Mbps
 - 13.35.2 **Lovejoy Health Center** (HCP# 14996)
 - 13.35.2.1 Vendor shall provide pricing for all available symmetrical bandwidth increments from **20 Mbps** to 500 Mbps
 - 13.35.3 **Belgrade Regional Health Center** (HCP# 26410)
 - 13.35.3.1 Vendor shall provide pricing for all available symmetrical bandwidth increments from **30 Mbps** to 500 Mbps
 - 13.35.4 **Bethel Family Health Center** (HCP# 28528)
 - 13.35.4.1 Vendor shall provide pricing for all available symmetrical bandwidth increments from **100 Mbps** to 500 Mbps
 - 13.35.5 **HealthReach CHC/Bingham Area Health Center** (HCP# 14995)
 - 13.35.5.1 Vendor shall provide pricing for all available symmetrical bandwidth increments from **30 Mbps** to 500 Mbps
 - 13.35.6 **FirstLight Data Center** (HCP# 55504)

- 13.35.6.1 Vendor shall provide pricing for all available symmetrical bandwidth increments from **500 Mbps** to 1 Gbps
- 13.35.7 **Sheepscot Valley Health Center** (HCP# 15001)
 - 13.35.7.1 Vendor shall provide pricing for all available symmetrical bandwidth increments from **30 Mbps** to 500 Mbps
- 13.35.8 **Mt. Abram Regional Health Center** (HCP# 28529)
 - 13.35.8.1 Vendor shall provide pricing for all available symmetrical bandwidth increments from **100 Mbps** to 500 Mbps
- 13.35.9 **Western Maine Family Health Center** (HCP# 28575)
 - 13.35.9.1 Vendor shall provide pricing for all available symmetrical bandwidth increments from **30 Mbps** to 500 Mbps
- 13.35.10 **HealthReach CHC/Madison Area Health Center** (HCP# 14997)
 - 13.35.10.1 Vendor shall provide pricing for all available symmetrical bandwidth increments from **30 Mbps** to 500 Mbps
- 13.35.11 **FairPoint Data Center** (HCP# 26532)
 - 13.35.11.1 Vendor shall provide pricing for all available symmetrical bandwidth increments from **1 Gbps** to 5 Gbps
- 13.35.12 **Rangeley Family Medicine** (HCP# 28530)
 - 13.35.12.1 Vendor shall provide pricing for all available symmetrical bandwidth increments from **20 Mbps** to 500 Mbps
- 13.35.13 **Richmond Area Health Center** (HCP# 15000)
 - 13.35.13.1 Vendor shall provide pricing for all available symmetrical bandwidth increments from **100 Mbps** to 500 Mbps
- 13.35.14 **Strong Area Health Center** (HCP# 28531)
 - 13.35.14.1 Vendor shall provide pricing for all available symmetrical bandwidth increments from **100 Mbps** to 500 Mbps
- 13.36 **SVH/Hometown Health** (HCP#23454) requires one or more Layer 2 service(s) (or equivalent) connecting all of the following locations to the NETC cores (13.5.1 & 13.5.2)
 - 13.36.1 **SVH/Hometown Health** (HCP#23454)
 - 13.36.1.1 Vendor shall provide pricing for all available symmetrical bandwidth increments from **200 Mbps** to 500 Mbps
 - 13.36.2 **SFD/Hometown Health – Admin** (HCP# 46978)
 - 13.36.2.1 Vendor shall provide pricing for all available symmetrical bandwidth increments from **20 Mbps** to 100 Mbps
 - 13.36.3 **SFD/Hometown Health – Dexter** (HCP#23615)
 - 13.36.3.1 Vendor shall provide pricing for all available symmetrical bandwidth increments from **100 Mbps** to 500 Mbps
 - 13.36.4 **Nokomis Health** (HCP# 106414)
 - 13.36.4.1 Vendor shall provide pricing for all available symmetrical bandwidth increments from **50 Mbps** to 500 Mbps
 - 13.36.5 **Sebasticook Family Doctors - Data Center** (HCP# 107832)
 - 13.36.5.1 Vendor shall provide pricing for all available symmetrical bandwidth increments from **200 Mbps** to 500 Mbps

- 13.37 **Houlton Regional Hospital** (HCP# 13319) requires one or more Layer 2 service(s) (or equivalent) connecting all of the following locations to the NETC cores (13.5.1 & 13.5.2)
- 13.37.1 **Houlton Regional Hospital** (HCP# 13319)
- 13.37.1.1 Vendor shall provide pricing for all available symmetrical bandwidth increments from **1 Gbps** to 5 Gbps
- 13.38 **Huggins Hospital** (HCP# 18312) requires one or more Layer 2 service(s) (or equivalent) connecting all of the following locations to the NETC cores (13.5.1 & 13.5.2)
- 13.38.1 **Huggins Hospital** (HCP# 18312)
- 13.38.1.1 Vendor shall provide pricing for all available symmetrical bandwidth increments for a quantity of two (2) **1 Gbps** to 5 Gbps connections
- 13.38.1.2 To the extent possible each connection should be provided over a diverse path
- 13.38.2 **Alton Family Medicine** (HCP# 23524)
- 13.38.2.1 Vendor shall provide pricing for all available symmetrical bandwidth increments from **100 Mbps** to 500 Mbps
- 13.38.3 **Moultonborough Family Medicine** (HCP# 23444)
- 13.38.3.1 Vendor shall provide pricing for all available symmetrical bandwidth increments from **100 Mbps** to 500 Mbps
- 13.38.4 **Ossipee Family Medicine** (HCP# 23468)
- 13.38.4.1 Vendor shall provide pricing for all available symmetrical bandwidth increments from **100 Mbps** to 500 Mbps
- 13.38.5 **Tamworth Family Medicine** (HCP# 23769)
- 13.38.5.1 Vendor shall provide pricing for all available symmetrical bandwidth increments from **100 Mbps** to 500 Mbps
- 13.38.6 **Back Bay Rehabilitation** (HCP# 23795)
- 13.38.6.1 Vendor shall provide pricing for all available symmetrical bandwidth increments from **50 Mbps** to 500 Mbps
- 13.39 **Islands Community Medical Services** (HCP# 15028) requires one or more Layer 2 service(s) (or equivalent) connecting all of the following locations to the NETC cores (13.5.1 & 13.5.2)
- 13.39.1 **Islands Community Medical Services** (HCP# 15028)
- 13.39.1.1 Vendor shall provide pricing for all available symmetrical bandwidth increments from **100 Mbps** to 500 Mbps
- 13.40 **Little Rivers Health Care – Bradford** (HCP# 23573) requires one or more Layer 2 service(s) (or equivalent) connecting all of the following locations to the NETC cores (13.5.1 & 13.5.2)
- 13.40.1 **Little Rivers Health Care – Bradford** (HCP# 23573)
- 13.40.1.1 Vendor shall provide pricing for all available symmetrical bandwidth increments from **100 Mbps** to 1 Gbps
- 13.40.1.2 Please provide additional pricing for a diverse circuit **500 Mbps** to 1 Gbps
- 13.40.2 **Little Rivers Health Care – Administration** (HCP# 26798)

- 13.40.2.1 Vendor shall provide pricing for all available symmetrical bandwidth increments from **500 Mbps** to 1 Gbps
- 13.40.2.2 Please provide additional pricing for a diverse circuit 100 Mbps to 1 Gbps
- 13.40.3 **Little Rivers Health Care - East Corinth** (HCP# 26450)
 - 13.40.3.1 Vendor shall provide pricing for all available symmetrical bandwidth increments from **100 Mbps** to 500 Mbps
- 13.40.4 **Little Rivers Health Care - Wells River** (HCP# 26535)
 - 13.40.4.1 Vendor shall provide pricing for all available symmetrical bandwidth increments from **100 Mbps** to 500 Mbps
 - 13.40.4.2 Please provide additional pricing for a diverse circuit **500 Mbps** to 1 Gbps
- 13.40.5 **Little Rivers Health Care, Inc.** (HCP# 96258)
 - 13.40.5.1 Vendor shall provide pricing for all available symmetrical bandwidth increments from **100 Mbps** to 500 Mbps
 - 13.40.5.2 Please provide additional pricing for a diverse circuit **100 Mbps** to 500 Mbps
- 13.41 **Littleton Regional Healthcare** (HCP# 14560) requires one or more Layer 2 service(s) (or equivalent) connecting all of the following locations to the NETC cores (13.5.1 & 13.5.2)
 - 13.41.1 **Littleton Regional Healthcare** (HCP# 14560)
 - 13.41.1.1 Vendor shall provide pricing for all available symmetrical bandwidth increments from **100 Mbps** to 500 Mbps
- 13.42 **Lakes Region General Hospital** (HCP# 14112) requires one or more Layer 2 service(s) (or equivalent) connecting all of the following locations to the NETC cores (13.5.1 & 13.5.2)
 - 13.42.1 **Lakes Region General Hospital** (HCP# 14112)
 - 13.42.1.1 Vendor shall provide pricing for all available symmetrical bandwidth increments from **500 Mbps** to 1 Gbps
 - 13.42.2 **Laconia Clinic** (HCP# 34353)
 - 13.42.2.1 Vendor shall provide pricing for all available symmetrical bandwidth increments from **30 Mbps** to 500 Mbps
 - 13.42.3 **Franklin Regional Hospital** (HCP# 14113)
 - 13.42.3.1 Vendor shall provide pricing for all available symmetrical bandwidth increments from **200 Mbps** to 500 Mbps
 - 13.42.4 **Hillside Medical Park** (HCP# 44641)
 - 13.42.4.1 Vendor shall provide pricing for all available symmetrical bandwidth increments from **30 Mbps** to 500 Mbps
 - 13.42.5 **Interlakes Medical Center** (HCP# 34352)
 - 13.42.5.1 Vendor shall provide pricing for all available symmetrical bandwidth increments from **30 Mbps** to 500 Mbps
 - 13.42.6 **New Hampton Family Practice** (HCP# 28542)
 - 13.42.6.1 Vendor shall provide pricing for all available symmetrical bandwidth increments from **30 Mbps** to 500 Mbps
 - 13.42.7 **Belmont Family Health** (HCP# 28539)

- 13.42.7.1 Vendor shall provide pricing for all available symmetrical bandwidth increments from **30 Mbps** to 500 Mbps.
- 13.43 **MaineGeneral Medical Center - Augusta Campus** (HCP# 46757) requires one or more Layer 2 service(s) (or equivalent) connecting all of the following locations to the NETC cores (13.5.1 & 13.5.2)
 - 13.43.1 **MaineGeneral Medical Center - Augusta Campus** (HCP# 46757)
 - 13.43.1.1 Vendor shall provide pricing for all available symmetrical bandwidth increments from **1 Gbps** to 5 Gbps
 - 13.43.2 **Maine Dartmouth & Four Seasons FP** (HCP# 46760)
 - 13.43.2.1 Vendor shall provide pricing for all available symmetrical bandwidth increments from **10 Mbps** to 500 Mbps
 - 13.43.3 **Oakland Family Health Care, PA** – 9 Pleasant St., STE 1, Oakland ME
 - 13.43.3.1 Vendor shall provide pricing for all available symmetrical bandwidth increments from **20 Mbps** to 500 Mbps
 - 13.43.4 **WIC (Skowhegan)** - 165 North Avenue Skowhegan, ME
 - 13.43.4.1 Vendor shall provide pricing for all available symmetrical bandwidth increments from **50 Mbps** to 500 Mbps
 - 13.43.5 **MaineGeneral Medical Center--Thayer Campus** (HCP# 26533)
 - 13.43.5.1 Vendor shall provide pricing for all available symmetrical bandwidth increments from **1 Gbps** to 5 Gbps
 - 13.43.6 **Waterville Family (Elmwood)** – 211 Main St, Waterville ME
 - 13.43.6.1 Vendor shall provide pricing for all available symmetrical bandwidth increments from **10 Mbps** to 500 Mbps
 - 13.43.7 **MaineGeneral Medical Center-Winthrop Commerce Ctr** (HCP# 26543)
 - 13.43.7.1 Vendor shall provide pricing for all available symmetrical bandwidth increments from **100 Mbps** to 500 Mbps
 - 13.43.8 **MaineGeneral Medical Center-Gardiner** (HCP# 26457)
 - 13.43.8.1 Vendor shall provide pricing for all available symmetrical bandwidth increments from **20 Mbps** to 500 Mbps
 - 13.43.9 **Oakland Family Health Care, PA** – 25 First Park Dr., Oakland, ME
 - 13.43.9.1 Vendor shall provide pricing for all available symmetrical bandwidth increments from **20 Mbps** to 500 Mbps
- 13.44 **Maine Sea Coast Mission Acadia Family Center** (HCP# 26519) requires one or more Layer 2 service(s) (or equivalent) connecting all of the following locations to the NETC cores (13.5.1 & 13.5.2)
 - 13.44.1 **Maine Sea Coast Mission - Mobile Clinic – Monhegan** (HCP# 23698)
 - 13.44.1.1 Vendor shall provide pricing for all available symmetrical bandwidth increments from **3 Mbps** to 100 Mbps
 - 13.44.2 **Hope Health** (HCP# 28546)
 - 13.44.2.1 Vendor shall provide pricing for all available symmetrical bandwidth increments from **3 Mbps** to 100 Mbps
 - 13.44.3 **Colket Data Center** (HCP# 27243)
 - 13.44.3.1 Vendor shall provide pricing for all available symmetrical bandwidth increments from **50 Mbps** to 500 Mbps
 - 13.44.4 **Maine Sea Coast Mission - Mobile Clinic - Cranberry Isles** (HCP# 23608)

- 13.44.4.1 Vendor shall provide pricing for all available symmetrical bandwidth increments from **3 Mbps** to 100 Mbps
- 13.44.5 **Maine Sea Coast Mission - Mobile Clinic – Frenchboro** (HCP# 13583)
 - 13.44.5.1 Vendor shall provide pricing for all available symmetrical bandwidth increments from **5 Mbps** to 100 Mbps
- 13.44.6 **Hallowell Family Practice** (HCP# 26770)
 - 13.44.6.1 Vendor shall provide pricing for all available symmetrical bandwidth increments from **5 Mbps** to 100 Mbps
- 13.44.7 **Maine Sea Coast Mission - Mobile Clinic - Isle au Haut** (HCP# 23661)
 - 13.44.7.1 Vendor shall provide pricing for all available symmetrical bandwidth increments from **5 Mbps** to 100 Mbps
- 13.44.8 **Maine Sea Coast Mission - Mobile Clinic – Matinicus** (HCP# 13585)
 - 13.44.8.1 Vendor shall provide pricing for all available symmetrical bandwidth increments from **5 Mbps** to 100 Mbps
- 13.44.9 **Maine Sea Coast Mission - Swans Island** (HCP# 13584)
 - 13.44.9.1 Vendor shall provide pricing for all available symmetrical bandwidth increments from **3 Mbps** to 100 Mbps
- 13.45 **MidState Health Center – Plymouth** (HCP# 23474) requires one or more Layer 2 service(s) (or equivalent) connecting all of the following locations to the NETC cores (13.5.1 & 13.5.2)
 - 13.45.1 **MidState Health Center – Plymouth** (HCP# 23474)
 - 13.45.1.1 Vendor shall provide pricing for all available symmetrical bandwidth increments from **100 Mbps** to 500 Mbps
 - 13.45.2 **MidState Health Center – Bristol** (HCP# 28549)
 - 13.45.2.1 Vendor shall provide pricing for all available symmetrical bandwidth increments from **100 Mbps** to 500 Mbps
 - 13.45.3 **MidState Health Center – PARC** (HCP# 71893)
 - 13.45.3.1 Vendor shall provide pricing for all available symmetrical bandwidth increments from **20 Mbps** to 500 Mbps
- 13.46 **Millinocket Regional Hospital** (HCP# 13932) requires one or more Layer 2 service(s) (or equivalent) connecting all of the following locations to the NETC cores (13.5.1 & 13.5.2)
 - 13.46.1 **Millinocket Regional Hospital** (HCP# 13932)
 - 13.46.1.1 Vendor shall provide pricing for all available symmetrical bandwidth increments from **200 Mbps** to 500 Mbps
 - 13.46.2 **Millinocket Regional Hospital Walk-In Care** (HCP# 55463)
 - 13.46.2.1 Vendor shall provide pricing for all available symmetrical bandwidth increments from **30 Mbps** to 500 Mbps
 - 13.46.3 **White Birch Medical Center** (HCP# 23696)
 - 13.46.3.1 Vendor shall provide pricing for all available symmetrical bandwidth increments from **30 Mbps** to 500 Mbps
- 13.47 **Mount Desert Island Hospital** (HCP# 14212) requires one or more Layer 2 service(s) (or equivalent) connecting all of the following locations to the NETC cores (13.5.1 & 13.5.2)
 - 13.47.1 **Mount Desert Island Hospital** (HCP# 14212)

- 13.47.1.1 Vendor shall provide pricing for all available symmetrical bandwidth increments from **1 Gbps** to 10 Gbps.
 - 13.47.1.2 Please provide additional pricing for a diverse **500 Mbps** to 1 Gbps connection
- 13.47.2 **Data Center** (HCP# 72038)
 - 13.47.2.1 Vendor shall provide pricing for all available symmetrical bandwidth increments from **30 Mbps** to 500 Mbps
- 13.47.3 **Community Health Center** (HCP# 23756)
 - 13.47.3.1 Vendor shall provide pricing for all available symmetrical bandwidth increments from **50 Mbps** to 500 Mbps
- 13.47.4 **Trenton Health Center** (HCP# 23771)
 - 13.47.4.1 Vendor shall provide pricing for all available symmetrical bandwidth increments from **50 Mbps** to 500 Mbps
- 13.48 **Mt. Ascutney Hospital & Health Center** (HCP# 16637) requires one or more Layer 2 service(s) (or equivalent) connecting all of the following locations to the NETC cores (13.5.1 & 13.5.2)
 - 13.48.1 **Mt. Ascutney Hospital & Health Center** (HCP# 16637)
 - 13.48.1.1 Vendor shall provide pricing for all available symmetrical bandwidth increments from **200 Mbps** to 500 Mbps
 - 13.48.2 **Ophthalmology** – 80 South Main St, Hanover, NH
 - 13.48.2.1 Vendor shall provide pricing for all available symmetrical bandwidth increments from **30 Mbps** to 500 Mbps
 - 13.48.3 **Ottauquechee Health Center** (HCP# 15899)
 - 13.48.3.1 Vendor shall provide pricing for all available symmetrical bandwidth increments from **50 Mbps** to 500 Mbps
- 13.49 **North Country Health – Littleton** (HCP# 55342) requires one or more Layer 2 service(s) (or equivalent) connecting all of the following locations to the NETC cores (13.5.1 & 13.5.2)
 - 13.49.1 **North Country Health – Littleton** (HCP# 55342)
 - 13.49.1.1 Vendor shall provide pricing for all available symmetrical bandwidth increments from **50 Mbps** to 500 Mbps
- 13.50 **Northeastern Vermont Regional Hospital** (HCP# 16042) requires one or more Layer 2 service(s) (or equivalent) connecting all of the following locations to the NETC cores (13.5.1 & 13.5.2)
 - 13.50.1 **Northeastern Vermont Regional Hospital** (HCP# 16042)
 - 13.50.1.1 Vendor shall provide pricing for all available symmetrical bandwidth increments from **2 Gbps** to 5 Gbps
 - 13.50.1.2 Please provide additional pricing for a diverse connection with bandwidth increments from **100 Mbps** to 500 Mbps
 - 13.50.2 **Northern Physical Therapy** (HCP# 66817)
 - 13.50.2.1 Vendor shall provide pricing for all available symmetrical bandwidth increments from **200 Mbps** to 500 Mbps
 - 13.50.3 **NVRH Corner Medical** (HCP#23684)
 - 13.50.3.1 Vendor shall provide pricing for all available symmetrical bandwidth increments for **1 Gbps** to 5 Gbps

- 13.51 **North Country Hospital** (HCP# 14581) requires one or more Layer 2 service(s) (or equivalent) connecting all of the following locations to the NETC cores (13.5.1 & 13.5.2)
 - 13.51.1 **North Country Hospital** (HCP# 14581)
 - 13.51.1.1 Vendor shall provide pricing for all available symmetrical bandwidth increments from **20 Mbps** to 500 Mbps
- 13.52 **Northeast Kingdom Human Services - Derby** (HCP# 26481) requires one or more Layer 2 service(s) (or equivalent) connecting all of the following locations to the NETC cores (13.5.1 & 13.5.2)
 - 13.52.1 **Northeast Kingdom Human Services, Inc.** (HCP# 62487)
 - 13.52.1.1 Vendor shall provide pricing for all available symmetrical bandwidth increments from **50 Mbps** to 500 Mbps
 - 13.52.2 **Northeast Kingdom Human Services - Derby** (HCP# 26481)
 - 13.52.2.1 Vendor shall provide pricing for all available symmetrical bandwidth increments from **500 Mbps** to 1 Gbps
 - 13.52.3 **Northeast Kingdom Human Services - St. Johnsbury** (HCP# 26502)
 - 13.52.3.1 Vendor shall provide pricing for all available symmetrical bandwidth increments from **500 Mbps** to 1 Gbps
 - 13.52.4 **Northeast Kingdom Human Services – 1111 Main St, St. Johnsbury, VT**
 - 13.52.4.1 Vendor shall provide pricing for all available symmetrical bandwidth increments from **50 Mbps** to 500 Mbps
 - 13.52.5 **Northeast Kingdom Human Services – Lakemont – 235 Lakemont Rd, Newport, VT**
 - 13.52.5.1 Vendor shall provide pricing for all available symmetrical bandwidth increments from **200 Mbps** to 500 Mbps
 - 13.52.6 **Northeast Kingdom Human Services/Lyndonville** (HCP# 103552)
 - 13.52.6.1 Vendor shall provide pricing for all available symmetrical bandwidth increments from **50 Mbps** to 500 Mbps
 - 13.52.7 **Northeast Kingdom Human Services/McGoff Hill – 949 McGoff Hill, Lyndon, VT**
 - 13.52.7.1 Vendor shall provide pricing for all available symmetrical bandwidth increments from **200 Mbps** to 500 Mbps
- 13.53 **Northern Counties Health Care** (HCP# 23763) requires one or more Layer 2 service(s) (or equivalent) connecting all of the following locations to the NETC cores (13.5.1 & 13.5.2)
 - 13.53.1 **Northern Counties Health Care** (HCP# 23763)
 - 13.53.1.1 Vendor shall provide pricing for all available symmetrical bandwidth increments from **1 Gbps** to 5 Gbps
 - 13.53.2 **Concord Health Center** (HCP# 28554)
 - 13.53.2.1 Vendor shall provide pricing for all available symmetrical bandwidth increments from **100 Mbps** to 500 Mbps
 - 13.53.3 **Danville Health Center** (HCP# 11736)
 - 13.53.3.1 Vendor shall provide pricing for all available symmetrical bandwidth increments from **100 Mbps** to 500 Mbps
 - 13.53.4 **Northern Counties Dental Center** (HCP# 28558)

- 13.53.4.1 Vendor shall provide pricing for all available symmetrical bandwidth increments from **50 Mbps** to 500 Mbps
- 13.53.5 **Hardwick Health Center** (HCP# 28556)
 - 13.53.5.1 Vendor shall provide pricing for all available symmetrical bandwidth increments from **100 Mbps** to 500 Mbps
- 13.53.6 **Island Pond Health Center** (HCP# 11737)
 - 13.53.6.1 Vendor shall provide pricing for all available symmetrical bandwidth increments from **100 Mbps** to 500 Mbps
- 13.53.7 **Orleans Dental Center** (HCP# 51891)
 - 13.53.7.1 Vendor shall provide pricing for all available symmetrical bandwidth increments from **50 Mbps** to 500 Mbps
- 13.53.8 **Northern Express Care – St. Johnsbury** (HCP# 93382)
 - 13.53.8.1 Vendor shall provide pricing for all available symmetrical bandwidth increments from **50 Mbps** to 500 Mbps
- 13.53.9 **Northern Express Care – Newport** (HCP# 110989)
 - 13.53.9.1 Vendor shall provide pricing for all available symmetrical bandwidth increments from **50 Mbps** to 500 Mbps
- 13.54 **Northern Light (Eastern Maine Healthcare Systems)** (HCP# 23535) requires one or more Layer 2 service(s) (or equivalent) connecting all of the following locations to the NETC cores (13.5.1 & 13.5.2)
 - 13.54.1 **Northern Light (Eastern Maine Healthcare Systems)** (HCP# 23535)
 - 13.54.1.1 Vendor shall provide pricing for all available symmetrical bandwidth increments from **1 Gbps** to 5 Gbps
 - 13.54.2 **Bangor Data Center** (HCP# 46663)
 - 13.54.2.1 Vendor shall provide pricing for all available symmetrical bandwidth increments from **5 Gbps** to 20 Gbps
 - 13.54.3 **Maine Coast Memorial Hospital** (HCP# 11526)
 - 13.54.3.1 Vendor shall provide pricing for all available symmetrical bandwidth increments from **1 Gbps** to 5 Gbps
 - 13.54.4 **Eleanor Widener Dixon Memorial Clinic** (HCP# 23651)
 - 13.54.4.1 Vendor shall provide pricing for all available symmetrical bandwidth increments from **100 Mbps** to 1 Gbps
 - 13.54.5 **Ellsworth Internal Med, Family Practice and Pediatrics** (HCP# 26452)
 - 13.54.5.1 Vendor shall provide pricing for all available symmetrical bandwidth increments from **200 Mbps** to 5 Gbps
 - 13.54.6 **Southwest Harbor Medical Center** (HCP#26518)
 - 13.54.6.1 Vendor shall provide pricing for all available symmetrical bandwidth increments from **100 Mbps** to 5 Gbps
- 13.55 **Northern Light (Mayo Regional Hospital)** (HCP# 23618) requires one or more Layer 2 service(s) (or equivalent) connecting all of the following locations to the NETC cores (13.5.1 & 13.5.2)
 - 13.55.1 **Northern Light (Mayo Regional Hospital)** (HCP# 23618)
 - 13.55.1.1 Vendor shall provide pricing for all available symmetrical bandwidth increments from **1 Gbps** to 5 Gbps
 - 13.55.2 **Mayo Regional Hospital - Counseling Program** (HCP# 23619)

- 13.55.2.1 Vendor shall provide pricing for all available symmetrical bandwidth increments from **50 Mbps** to 500 Mbps
- 13.55.3 **Mayo Regional Hospital - Corinth Family Practice** (HCP# 23607)
 - 13.55.3.1 Vendor shall provide pricing for all available symmetrical bandwidth increments from **30 Mbps** to 500 Mbps
- 13.55.4 **Dexter EMS** – 238 Spring St, Dexter, ME
 - 13.55.4.1 Vendor shall provide pricing for all available symmetrical bandwidth increments from **30 Mbps** to 500 Mbps
- 13.55.5 **Mayo Regional Hospital - Dexter Internal Medicine** (HCP# 23613)
 - 13.55.5.1 Vendor shall provide pricing for all available symmetrical bandwidth increments from **30 Mbps** to 500 Mbps
- 13.55.6 **Mayo Regional Hospital - Milo Family Practice** (HCP# 23697)
 - 13.55.6.1 Vendor shall provide pricing for all available symmetrical bandwidth increments from **30 Mbps** to 500 Mbps
- 13.55.7 **Mayo Regional Hospital - Corinth EMS** (HCP# 23654)
 - 13.55.7.1 Vendor shall provide pricing for all available symmetrical bandwidth increments from **30 Mbps** to 500 Mbps
- 13.56 **Northern Maine Medical Center** (HCP# 23640) requires one or more Layer 2 service(s) (or equivalent) connecting all of the following locations to the NETC cores (13.5.1 & 13.5.2)
 - 13.56.1 **Northern Maine Medical Center** (HCP# 23640)
 - 13.56.1.1 Vendor shall provide pricing for all available symmetrical bandwidth increments from **500 Mbps** to 1 Gbps
 - 13.56.2 **Acadia Family Health Center** (HCP# 23689)
 - 13.56.2.1 Vendor shall provide pricing for all available symmetrical bandwidth increments from **100 Mbps** to 500 Mbps
- 13.57 **Northwestern Counseling & Support Services** (HCP# 26500) requires one or more Layer 2 service(s) (or equivalent) connecting all of the following locations to the NETC cores (13.5.1 & 13.5.2)
 - 13.57.1 **Northwestern Counseling & Support Services** (HCP# 26500)
 - 13.57.1.1 Vendor shall provide pricing for all available symmetrical bandwidth increments from **100 Mbps** to 500 Mbps
- 13.58 **Northwestern Medical Center - St. Albans** (HCP# 23760) requires one or more Layer 2 service(s) (or equivalent) connecting all of the following locations to the NETC cores (13.5.1 & 13.5.2)
 - 13.58.1 **Northwestern Medical Center - St. Albans** (HCP# 23760)
 - 13.58.1.1 Vendor shall provide pricing for all available symmetrical bandwidth increments from **1 Gbps** to 5 Gbps
 - 13.58.2 **Northwestern Ophthalmology** (HCP# 33905)
 - 13.58.2.1 Vendor shall provide pricing for all available symmetrical bandwidth increments from **50 Mbps** to 500 Mbps
 - 13.58.3 **Valley Crossroads** -27 Fisher Pond Road St. Albans VT
 - 13.58.3.1 Vendor shall provide pricing for all available symmetrical bandwidth increments from **100 Mbps** to 1 Gbps
 - 13.58.4 **Georgia** (HCP# 23646)

- 13.58.4.1 Vendor shall provide pricing for all available symmetrical bandwidth increments from **50 Mbps** to 500 Mbps
- 13.58.5 **Vermont Technical College** (HCP# 33906)
 - 13.58.5.1 Vendor shall provide pricing for all available symmetrical bandwidth increments from **50 Mbps** to 500 Mbps
- 13.59 **Penobscot Community Health Care – Hampden** (HCP# 95156) requires one or more Layer 2 service(s) (or equivalent) connecting all of the following locations to the NETC cores (13.5.1 & 13.5.2)
 - 13.59.1 **Penobscot Community Health Care – Hampden** (HCP# 95156)
 - 13.59.1.1 Vendor shall provide pricing for all available symmetrical bandwidth increments from **50 Mbps** to 500 Mbps
 - 13.59.2 **Penobscot Community Health Care** (HCP# 35432)
 - 13.59.2.1 Vendor shall provide pricing for all available symmetrical bandwidth increments from **10 Mbps** to 500 Mbps
- 13.60 **Penobscot Valley Hospital - 7 Transalpine Road** (HCP# 14014) requires one or more Layer 2 service(s) (or equivalent) connecting all of the following locations to the NETC cores (13.5.1 & 13.5.2)
 - 13.60.1 **Penobscot Valley Hospital - 7 Transalpine Road** (HCP# 14014)
 - 13.60.1.1 Vendor shall provide pricing for all available symmetrical bandwidth increments from **200 Mbps** to 1 Gbps
 - 13.60.2 **Penobscot Valley Hospital Wellness Center** (HCP# 23680)
 - 13.60.2.1 Vendor shall provide pricing for all available symmetrical bandwidth increments from **20 Mbps** to 500 Mbps
- 13.61 **Porter Hospital** (HCP#10437) requires one or more Layer 2 service(s) (or equivalent) connecting all of the following locations to the NETC cores (13.5.1 & 13.5.2)
 - 13.61.1 **Porter Hospital** (HCP#10437)
 - 13.61.1.1 Vendor shall provide pricing for all available symmetrical bandwidth increments from **1 Gbps** to 5 Gbps
 - 13.61.2 **Neshobe Family Medicine** (HCP# 26415)
 - 13.61.2.1 Vendor shall provide pricing for all available symmetrical bandwidth increments from **100 Mbps** to 500 Mbps
 - 13.61.3 **Champlain Valley Orthopedics** (HCP# 35272)
 - 13.61.3.1 Vendor shall provide pricing for all available symmetrical bandwidth increments from **100 Mbps** to 500 Mbps
 - 13.61.4 **Podiatry** (HCP# 42007)
 - 13.61.4.1 Vendor shall provide pricing for all available symmetrical bandwidth increments from **50 Mbps** to 500 Mbps
 - 13.61.5 **Addison Family Medicine** (HCP# 26472)
 - 13.61.5.1 Vendor shall provide pricing for all available symmetrical bandwidth increments from **50 Mbps** to 500 Mbps
 - 13.61.6 **Catamount Physical Therapy** (HCP# 35271)
 - 13.61.6.1 Vendor shall provide pricing for all available symmetrical bandwidth increments from **20 Mbps** to 500 Mbps
 - 13.61.7 **PMCTrainingCenter** (HCP# 67811)

- 13.61.7.1 Vendor shall provide pricing for all available symmetrical bandwidth increments from **100 Mbps** to 500 Mbps
- 13.61.8 **Little City Family Medicine** (HCP# 26526)
 - 13.61.8.1 Vendor shall provide pricing for all available symmetrical bandwidth increments from **50 Mbps** to 500 Mbps
- 13.62 **Redington-Fairview General Hospital** (HCP# 23749) requires one or more Layer 2 service(s) (or equivalent) connecting all of the following locations to the NETC cores (13.5.1 & 13.5.2)
 - 13.62.1 **Redington-Fairview General Hospital** (HCP# 23749)
 - 13.62.1.1 Vendor shall provide pricing for all available symmetrical bandwidth increments from **5 Gbps** to 10 Gbps
 - 13.62.1.2 Please provide additional pricing for a diverse **5 Gbps** to 10 Gbps circuit.
 - 13.62.2 **Norridgewock Health Center** (HCP# 23455)
 - 13.62.2.1 Vendor shall provide pricing for all available symmetrical bandwidth increments from **1 Gbps** to 5 Gbps
 - 13.62.3 **Alfond Center for Health in Augusta** (HCP# 46757)
 - 13.62.3.1 Vendor shall provide pricing for all available symmetrical bandwidth increments from **1 Gbps** to 5 Gbps
 - 13.62.4 **Thayer Center for Health in Waterville** (HCP# 26533)
 - 13.62.4.1 Vendor shall provide pricing for all available symmetrical bandwidth increments from **1 Gbps** to 5 Gbps
- 13.63 **Regional Medical Center of Lubec/Healthways – Lubec** (HCP# 12553) requires one or more Layer 2 service(s) (or equivalent) connecting all of the following locations to the NETC cores (13.5.1 & 13.5.2)
 - 13.63.1 **Healthways – Lubec** (HCP# 12553)
 - 13.63.1.1 Vendor shall provide pricing for all available symmetrical bandwidth increments from **100 Mbps** to 500 Mbps
 - 13.63.2 **Healthways – Lubec** (HCP# 23624)
 - 13.63.2.1 Vendor shall provide pricing for all available symmetrical bandwidth increments from **50 Mbps** to 500 Mbps
- 13.64 **Richford Health Center (dba NOTCH)** (HCP# 15268) requires one or more Layer 2 service(s) (or equivalent) connecting all of the following locations to the NETC cores (13.5.1 & 13.5.2)
 - 13.64.1 **Richford Health Center (dba NOTCH)** (HCP# 15268)
 - 13.64.1.1 Vendor shall provide pricing for all available symmetrical bandwidth increments from **100 Mbps** to 500 Mbps
 - 13.64.2 **Alburg Health Center** (HCP# 15555)
 - 13.64.2.1 Vendor shall provide pricing for all available symmetrical bandwidth increments from **10 Mbps** to 500 Mbps
 - 13.64.3 **Enosburg Health Center** (HCP# 15556)
 - 13.64.3.1 Vendor shall provide pricing for all available symmetrical bandwidth increments from **10 Mbps** to 500 Mbps
 - 13.64.4 **Fairfax Health Center** (HCP# 26524)
 - 13.64.4.1 Vendor shall provide pricing for all available symmetrical bandwidth increments from **10 Mbps** to 500 Mbps

- 13.64.5 **St. Albans Health Center** (HCP# 26523)
 - 13.64.5.1 Vendor shall provide pricing for all available symmetrical bandwidth increments from **10 Mbps** to 500 Mbps
- 13.64.6 **Swanton Health Center** (HCP# 15557)
 - 13.64.6.1 Vendor shall provide pricing for all available symmetrical bandwidth increments from **10 Mbps** to 500 Mbps
- 13.64.7 **Georgia Health Center** – 4178 Highbridge Road, Fairfax, VT
 - 13.64.7.1 Vendor shall provide pricing for all available symmetrical bandwidth increments from **10 Mbps** to 500 Mbps
- 13.65 **Rutland Mental Health Services** (HCP# 23729) requires one or more Layer 2 service(s) (or equivalent) connecting all of the following locations to the NETC cores (13.5.1 & 13.5.2)
 - 13.65.1 **Rutland Mental Health Services** (HCP# 23729)
 - 13.65.1.1 Vendor shall provide pricing for all available symmetrical bandwidth increments from **1 Gbps** to 5 Gbps
 - 13.65.2 **Court Square Location** (HCP# 26496)
 - 13.65.2.1 Vendor shall provide pricing for all available symmetrical bandwidth increments from **200 Mbps** to 500 Mbps
 - 13.65.3 **Evergreen Center** (HCP# 26497)
 - 13.65.3.1 Vendor shall provide pricing for all available symmetrical bandwidth increments from **100 Mbps** to 500 Mbps
 - 13.65.4 **RC Headstart** (HCP# 28560)
 - 13.65.4.1 Vendor shall provide pricing for all available symmetrical bandwidth increments from **100 Mbps** to 500 Mbps
 - 13.65.5 **Pine Street Location** (HCP# 26498)
 - 13.65.5.1 Vendor shall provide pricing for all available symmetrical bandwidth increments from **50 Mbps** to 500 Mbps
 - 13.65.6 **Merchants Row Location** (HCP# 27361)
 - 13.65.6.1 Vendor shall provide pricing for all available symmetrical bandwidth increments from **100 Mbps** to 500 Mbps
 - 13.65.7 **Community Care Network Adult Programs** (HCP#26497)
 - 13.65.7.1 Vendor shall provide pricing for all available symmetrical bandwidth increments from **100 Mbps** to 500 Mbps
- 13.66 **Rutland Regional Medical Center** (HCP# 14215) requires one or more Layer 2 service(s) (or equivalent) connecting all of the following locations to the NETC cores (13.5.1 & 13.5.2)
 - 13.66.1 **Rutland Regional Medical Center** (HCP# 14215)
 - 13.66.1.1 Vendor shall provide pricing for all available symmetrical bandwidth increments from **1 Gbps** to 5 Gbps
 - 13.66.2 **Mid Vermont ENT/Dorset** (HCP# 28547)
 - 13.66.2.1 Vendor shall provide pricing for all available symmetrical bandwidth increments from **1 Gbps** to 5 Gbps
- 13.67 **Sacopee Valley Health Center** (HCP#23701) requires one or more Layer 2 service(s) (or equivalent) connecting all of the following locations to the NETC cores (13.5.1 & 13.5.2)
 - 13.67.1 **Sacopee Valley Health Center** (HCP#23701)

- 13.67.1.1 Vendor shall provide pricing for all available symmetrical bandwidth increments from **1 Gbps** to 5 Gbps
- 13.68 **Southwestern Vermont Health Care** (HCP# 14769) requires one or more Layer 2 service(s) (or equivalent) connecting all of the following locations to the NETC cores (13.5.1 & 13.5.2)
 - 13.68.1 **Southwestern Vermont Health Care** (HCP# 14769)
 - 13.68.1.1 Vendor shall provide pricing for all available symmetrical bandwidth increments from **500 Mbps** to 1 Gbps
 - 13.68.2 **Deerfield Valley Medical Center** (HCP# 27019)
 - 13.68.2.1 Vendor shall provide pricing for all available symmetrical bandwidth increments from **30 Mbps** to 500 Mbps
 - 13.68.3 **Northshire Medical Center** (HCP# 27018)
 - 13.68.3.1 Vendor shall provide pricing for all available symmetrical bandwidth increments from **30 Mbps** to 500 Mbps
 - 13.68.4 **Pownal Campus Clinic** (HCP# 46165)
 - 13.68.4.1 Vendor shall provide pricing for all available symmetrical bandwidth increments from **30 Mbps** to 500 Mbps
- 13.69 **Speare Memorial Hospital** (HCP# 11394) requires one or more Layer 2 service(s) (or equivalent) connecting all of the following locations to the NETC cores (13.5.1 & 13.5.2)
 - 13.69.1 **Speare Memorial Hospital** (HCP# 11394)
 - 13.69.1.1 Vendor shall provide pricing for all available symmetrical bandwidth increments from **1 Gbps** to 5 Gbps.
 - 13.69.1.2 Please provide additional pricing for a diverse **1 Gbps** to 5 Gbps circuit.
 - 13.69.2 **Boulder Point** (HCP# 26488)
 - 13.69.2.1 Vendor shall provide pricing for all available symmetrical bandwidth increments from **200 Mbps** to 500 Mbps
- 13.70 **St. Croix Regional Family Health Clinic – Princeton** (HCP# 23725) requires one or more Layer 2 service(s) (or equivalent) connecting all of the following locations to the NETC cores (13.5.1 & 13.5.2)
 - 13.70.1 **St. Croix Regional Family Health Clinic – Princeton** (HCP# 23725)
 - 13.70.1.1 Vendor shall provide pricing for all available symmetrical bandwidth increments from **200 Mbps** to 500 Mbps
- 13.71 **The Health Center – Washington** (HCP# 23473) requires one or more Layer 2 service(s) (or equivalent) connecting all of the following locations to the NETC cores (13.5.1 & 13.5.2)
 - 13.71.1 **The Health Center – Washington** (HCP# 23473)
 - 13.71.1.1 Vendor shall provide pricing for all available symmetrical bandwidth increments from **1 Gbps** to 5 Gbps
 - 13.71.2 **Cabot Health Services** (HCP# 26437)
 - 13.71.2.1 Vendor shall provide pricing for all available symmetrical bandwidth increments from **100 Mbps** to 500 Mbps
 - 13.71.3 **Dental Unit, South Barre Office** (HCP# 117832)
 - 13.71.3.1 Vendor shall provide pricing for all available symmetrical bandwidth increments from **1 Gbps** to 5 Gbps

- 13.71.4 **The Red House** - 230 High Street, Plainfield, VT
 - 13.71.4.1 Vendor shall provide pricing for all available symmetrical bandwidth increments from **1 Gbps** to 5 Gbps
- 13.72 **Upper Connecticut Valley Hospital** (HCP# 18321) requires one or more Layer 2 service(s) (or equivalent) connecting all of the following locations to the NETC cores (13.5.1 & 13.5.2)
 - 13.72.1 **Upper Connecticut Valley Hospital** (HCP# 18321)
 - 13.72.1.1 Vendor shall provide pricing for all available symmetrical bandwidth increments from **1 Gbps** to 5 Gbps
- 13.73 **UVM Medical Center** (HCP# 23592) requires one or more Layer 2 service(s) (or equivalent) connecting all of the following locations to the NETC cores (13.5.1 & 13.5.2)
 - 13.73.1 **UVM Medical Center** (HCP# 23592)
 - 13.73.1.1 Vendor shall provide pricing for all available symmetrical bandwidth increments from **1 Gbps** to 5 Gbps
 - 13.73.2 **UVM Medical Center - Ophthalmology – Berlin** (HCP# 15832)
 - 13.73.2.1 Vendor shall provide pricing for all available symmetrical bandwidth increments from **50 Mbps** to 500 Mbps
 - 13.73.3 **Dialysis - South Burlington** – 35 Joy Drive, South Burlington VT
 - 13.73.3.1 Vendor shall provide pricing for all available symmetrical bandwidth increments from **50 Mbps** to 500 Mbps
 - 13.73.4 **Dental and Oral Health** - 1060 Hinesburg Road, South Burlington, VT
 - 13.73.4.1 Vendor shall provide pricing for all available symmetrical bandwidth increments from **50 Mbps** to 500 Mbps
 - 13.73.5 **Dialysis – Rutland** (HCP# 14772)
 - 13.73.5.1 Vendor shall provide pricing for all available symmetrical bandwidth increments from **20 Mbps** to 500 Mbps
 - 13.73.6 **Clinical Genetics** - 112 Colchester Avenue South Burlington VT
 - 13.73.6.1 Vendor shall provide pricing for all available symmetrical bandwidth increments from **10 Mbps** to 500 Mbps
 - 13.73.7 **Green Mountain Urology** (HCP# 35264)
 - 13.73.7.1 Vendor shall provide pricing for all available symmetrical bandwidth increments from **100 Mbps** to 500 Mbps
 - 13.73.8 **Family Medicine – Hinesburg** (HCP# 28574)
 - 13.73.8.1 Vendor shall provide pricing for all available symmetrical bandwidth increments from **50 Mbps** to 500 Mbps
 - 13.73.9 **Cardiology / Pain Medicine** - 62 Tilley Drive, South Burlington, VT
 - 13.73.9.1 Vendor shall provide pricing for all available symmetrical bandwidth increments from **50 Mbps** to 500 Mbps
 - 13.73.10 **UVM Medical Center - 150 Pioneer Drive** (HCP# 26796)
 - 13.73.10.1 Vendor shall provide pricing for all available symmetrical bandwidth increments from **1 Gbps** to 5 Gbps
 - 13.73.11 **Aquatic Rehabilitation** – 32 Mallets Bay Ave, Winooski, VT
 - 13.73.11.1 Vendor shall provide pricing for all available symmetrical bandwidth increments from **20 Mbps** to 500 Mbps
 - 13.73.12 **Northwest Medical Cardiology / ENT/ Dermatology** (HCP# 16319)

- 13.73.12.1 Vendor shall provide pricing for all available symmetrical bandwidth increments from **50 Mbps** to 500 Mbps
- 13.74 **Valley Regional Hospital** (HCP# 16672) requires one or more Layer 2 service(s) (or equivalent) connecting all of the following locations to the NETC cores (13.5.1 & 13.5.2)
- 13.74.1 **Valley Regional Hospital** (HCP# 16672)
- 13.74.1.1 Vendor shall provide pricing for all available symmetrical bandwidth increments from **1 Gbps** to 5 Gbps
- 13.75 **North Country Health Consortium/Weeks Medical Center** (HCP# 14566) requires one or more Layer 2 service(s) (or equivalent) connecting all of the following locations to the NETC cores (13.5.1 & 13.5.2)
- 13.75.1 **North Country Health Consortium/Weeks Medical Center** (HCP# 14566)
- 13.75.1.1 Vendor shall provide pricing for all available symmetrical bandwidth increments from **1 Gbps** to 5 Gbps
- 13.76 **Wentworth-Douglass Hospital – Dover** (HCP# 23616) requires one or more Layer 2 service(s) (or equivalent) connecting all of the following locations to the NETC cores (13.5.1 & 13.5.2)
- 13.76.1 **Wentworth-Douglass Hospital – Dover** (HCP# 23616)
- 13.76.1.1 Vendor shall provide pricing for all available symmetrical bandwidth increments from **1 Gbps** to 5 Gbps (qty 2)
- 13.76.2 **Durham Health Center** - 36 Madbury Rd, Durham, NH
- 13.76.2.1 Vendor shall provide pricing for all available symmetrical bandwidth increments from **100 Mbps** to 500 Mbps
- 13.76.3 **Wentworth-Douglass Hospital – Lee** - 54 Calef Road, Route 125, Lee, NH
- 13.76.3.1 Vendor shall provide pricing for all available symmetrical bandwidth increments from **500 Mbps** to 1 Gbps
- 13.76.4 **Head & Neck Specialty Group of NH** - 361 High Street, Somersworth, NH
- 13.76.4.1 Vendor shall provide pricing for all available symmetrical bandwidth increments from **100 Mbps** to 500 Mbps
- 13.76.5 **South Berwick Family Practice** - 31 Colcord St, South Berwick, ME
- 13.76.5.1 Vendor shall provide pricing for all available symmetrical bandwidth increments from **100 Mbps** to 500 Mbps
- 13.76.6 **Durham Rehab & Sports Therapy** – 16 Jenkins Ct, Durham, NH
- 13.76.6.1 Vendor shall provide pricing for all available symmetrical bandwidth increments from **100 Mbps** to 500 Mbps
- 13.76.7 **Barrington Health Center** – 8 Century Pines Dr, Suite 2, Barrington NH
- 13.76.7.1 Vendor shall provide pricing for all available symmetrical bandwidth increments from **100 Mbps** to 500 Mbps
- 13.76.8 **Rochester Primary Care** - 92 Farmington Road, Unit 150-9, Rochester, NH
- 13.76.8.1 Vendor shall provide pricing for all available symmetrical bandwidth increments from **100 Mbps** to 500 Mbps
- 13.77 **York Hospital – 15 Hospital Drive** (HCP# 23800) requires one or more Layer 2 service(s) (or equivalent) connecting all of the following locations to the NETC cores (13.5.1 & 13.5.2)
- 13.77.1 **York Hospital – 15 Hospital Drive** (HCP# 23800)

- 13.77.1.1 Vendor shall provide pricing for all available symmetrical bandwidth increments from **2 Gbps** to 5 Gbps
- 13.77.1.2 Please provide additional pricing for a diverse **1 Gbps** to 5 Gbps circuit.
- 13.77.2 **York Hospital in Sanford** (HCP# 60192)
 - 13.77.2.1 Vendor shall provide pricing for all available symmetrical bandwidth increments from **100 Mbps** to 500 Mbps
- 13.77.3 **Kittery Family Practice** - 35 Walker Street, Kittery, ME
 - 13.77.3.1 Vendor shall provide pricing for all available symmetrical bandwidth increments from **200 Mbps** to 500 Mbps
- 13.77.4 **Services at Kittery** - 75 US Route1 Bypass, Kittery, ME
 - 13.77.4.1 Vendor shall provide pricing for all available symmetrical bandwidth increments from **50 Mbps** to 500 Mbps
- 13.77.5 **South Berwick Medical Services** - 57 Portland Street, South Berwick, ME
 - 13.77.5.1 Vendor shall provide pricing for all available symmetrical bandwidth increments from **500 Mbps** to 1 Gbps
- 13.77.6 **Walk-in-Care** - 343 US-1, York, ME
 - 13.77.6.1 Vendor shall provide pricing for all available symmetrical bandwidth increments from **100 Mbps** to 500 Mbps
- 13.77.7 **Wells Regional Medical Services** (HCP# 23782)
 - 13.77.7.1 Vendor shall provide pricing for all available symmetrical bandwidth increments from **500 Mbps** to 1 Gbps
- 13.77.8 **Berwick Medical Services** – 4 Dana Drive, Berwick, ME
 - 13.77.8.1 Vendor shall provide pricing for all available symmetrical bandwidth increments from **100 Mbps** to 500 Mbps
- 13.77.9 **Cardiovascular Care of YH – Portsmouth** - 235 Commerce Way 3rd floor, Portsmouth, NH
 - 13.77.9.1 Vendor shall provide pricing for all available symmetrical bandwidth increments from **200 Mbps** to 500 Mbps
- 13.78 **Springfield Hospital** (HCP# 23757) requires one or more Layer 2 service(s) (or equivalent) connecting all of the following locations to the NETC cores (13.5.1 & 13.5.2)
 - 13.78.1 **Springfield Hospital** (HCP# 23757)
 - 13.78.1.1 Vendor shall provide pricing for all available symmetrical bandwidth increments from **500 Mbps** to 1 Gbps
- 13.79 **Springfield Health Center** (HCP# 57299) requires one or more Layer 2 service(s) (or equivalent) connecting all of the following locations to the NETC cores (13.5.1 & 13.5.2)
 - 13.79.1 **Springfield Health Center** (HCP# 57299)
 - 13.79.1.1 Vendor shall provide pricing for all available symmetrical bandwidth increments from **500 Mbps** to 1 Gbps
- 13.80 **Lakes Regional Mental Health** (HCP# 76351) requires one or more Layer 2 service(s) (or equivalent) connecting all of the following locations to the NETC cores (13.5.1 & 13.5.2)
 - 13.80.1 **Lakes Regional Mental Health** (HCP# 76351)

- 13.80.1.1 Vendor shall provide pricing for all available symmetrical bandwidth increments from **2000 Mbps** to 5 Gbps
- 13.80.2 **Emergency & Short-Term Services** (HCP# 98095)
 - 13.80.2.1 Vendor shall provide pricing for all available symmetrical bandwidth increments from **100 Mbps** to 1 Gbps
- 13.80.3 **Plymouth Office** (HCP# 98120)
 - 13.80.3.1 Vendor shall provide pricing for all available symmetrical bandwidth increments from **500 Mbps** to 1 Gbps
- 13.80.4 **LRMH 23 Messer St** (HCP# 98116)
 - 13.80.4.1 Vendor shall provide pricing for all available symmetrical bandwidth increments from **100 Mbps** to 1 Gbps
- 13.80.5 **LRMH 24 McGrath St** (HCP# 98119)
 - 13.80.5.1 Vendor shall provide pricing for all available symmetrical bandwidth increments from **100 Mbps** to 1 Gbps

12. Pricing

- 12.1 NETC desires to purchase and provision a network that will be sustainable for 10 years, with very competitive rates for the 10-year sustainability period. These very competitive rates will make the network affordable and provide participating entities with affordable 10-year network costs.
- 12.2 NETC desires that pricing be postalized and based on circuit bandwidth and not on the geographic location of a NETC site.
- 12.3 Payments are contingent upon delivery of a service.
- 12.4 Ineligible sites will pay their non-subsidized and “fair share” price.
- 12.5 Cost to complete all aspects of the network services as outlined in this RFP must be clearly stated in the proposal, must include all costs including travel and out of pocket costs, and the cost quoted must be specified as either a “fixed” or “not to exceed” price.
- 12.6 Service Level Agreements (SLA) will be required (section 11.78 is exempt). The SLAs will be based on QoS requirements listed in Section 10. Penalties will be negotiated with selected vendors.
- 12.7 NETC desires the ability to move contracted circuits, add new circuits, remove contracted circuits, and increase bandwidth within the terms of the contract. Proposing Vendor shall describe how they would accommodate this desire. The details will be negotiated in the final contract with selected vendors.

13. Miscellaneous Fees

- 13.1 Responding Vendor shall state the Universal Service Fund fee or percentage if applicable. If applicable, Responding Vendor shall define the charge and describe how it is calculated.
- 13.2 Because NETC obtains federal subsidies on costs identified through the RFP process, it is critical for the Responding Vendor to provide an accurate estimate of all costs that may be incurred by HCPs, including non-recurring costs, monthly recurring costs, taxes, and fees that may apply.

- 13.3 The Responding Vendor should define those charges and describe how they are calculated so that NETC can include all anticipated costs in the subsidy request under the Healthcare Connect Fund program.

14. Evergreen Contracts

- 14.1 NETC wishes to maximize the opportunity to obtain Evergreen contracts that result from this RFP; therefore, the following provisions should be included in final contract language:
- 14.1.1 It should refer to itself as a Master Services Agreement;
 - 14.1.2 It should specify Net 45-day payment terms;
 - 14.1.3 It should be signed by the Billing Entity;
 - 14.1.4 It should specify the service type, bandwidth, and quantity;
 - 14.1.5 It should specify the term of the contract;
 - 14.1.6 It should specify the cost of services to be provided;
 - 14.1.7 It should include the physical addresses or other identifying information of the HCPs purchasing from the agreement;
 - 14.1.8 It should specify that upon reaching the end of a contract term that services will continue at the same rates as during the contract term but on a month to month basis;
 - 14.1.9 It should specify that extension of services beyond the original contract term is automatic unless sufficient notification to terminate is given by either party;
 - 14.1.10 It should contain language that allows for Site and Service Substitutions pursuant to FCC 12-150 Rural Health Care Support Mechanism Appendix D (Final Rules), 47 C.F.R. § 54.646. The Responding Vendor shall allow the Billing Entity to add sites and/or upgrade, change, or relocate services and/or bandwidth. This language permits the Billing Entity to make network changes without going to competitive bid.

15. Billing

- 15.1 New England Telehealth Consortium shall be the Billing Entity.
- 15.2 Responding Vendor shall describe their capability to provide for duplicate electronic or paper billing.
- 15.3 Reimbursement for network services must comply with Healthcare Connect Fund rules and procedures, and the terms of payment must accommodate USAC billing and payment timeframes. Initial payments are contingent upon delivery of service.
- 15.4 Each Responding Vendor must clearly and specifically state their understanding of and adherence to the FCC/USAC Healthcare Connect Fund payment procedures.
- 15.5 ACH Transfer will be the preferred method of payment.
- 15.6 Additional Fees:
- 15.6.1 Proposing Vendor must include all fees and taxes that will be assessed on any services provided to New England Telehealth Consortium.

- 15.6.2 Successful Vendors must agree that Late Fees will not be assessed against the portion of the invoice funded by USAC.
- 15.7 Responding vendors shall provide a billing portal that allows NETC to access monthly bills.
- 15.8 HCP Participants shall have the ability to suspend circuits and associated billing for up to 1 year during the life of the applicable service order.

16. Evaluation and Selection Criteria

- 16.1 NETC will select the most cost-effective vendor per USAC requirements. Each Responding Vendor is encouraged to provide detailed responses to demonstrate its experience and expertise in providing WAN and Internet. The selection will be based on all factors listed and may not go to the lowest price proposal if price is outweighed by a combination of other features and factors in the winning Responding Vendor's proposal.
- 16.2 NETC reserves the right to select proposals that, in the sole judgment of NETC, most nearly conform to the specifications set forth herein, will best serve the needs of NETC and its participants, and provides the most cost-effective means of producing those results.
- 16.3 NETC is not obligated to accept or select any proposal received in response to this RFP. In particular, NETC may select proposals in whole or in part, or it may disqualify any and all proposals received.
- 16.4 Changes in applicable laws and rules may affect the award process or any resulting contracts. Responding Vendors are responsible for determining legal requirements and restrictions that may apply. Responding Vendors are encouraged to visit the official Federal websites pertaining to the Healthcare Connect Fund at: <http://www.universalservice.org/rhc/healthcare-connect/default.aspx>
- 16.5 The selection decisions made by NETC and reported to USAC under this RFP are final.
- 16.6 NETC will evaluate proposals and select vendors based on the following criteria:

Criteria	Scoring Weight
Costs	20%
Ease of Implementation	20%
Experience with Vendor	20%
Technical Merit of Proposal	20%
Compliance with HCF Payment Process and Rules	20%

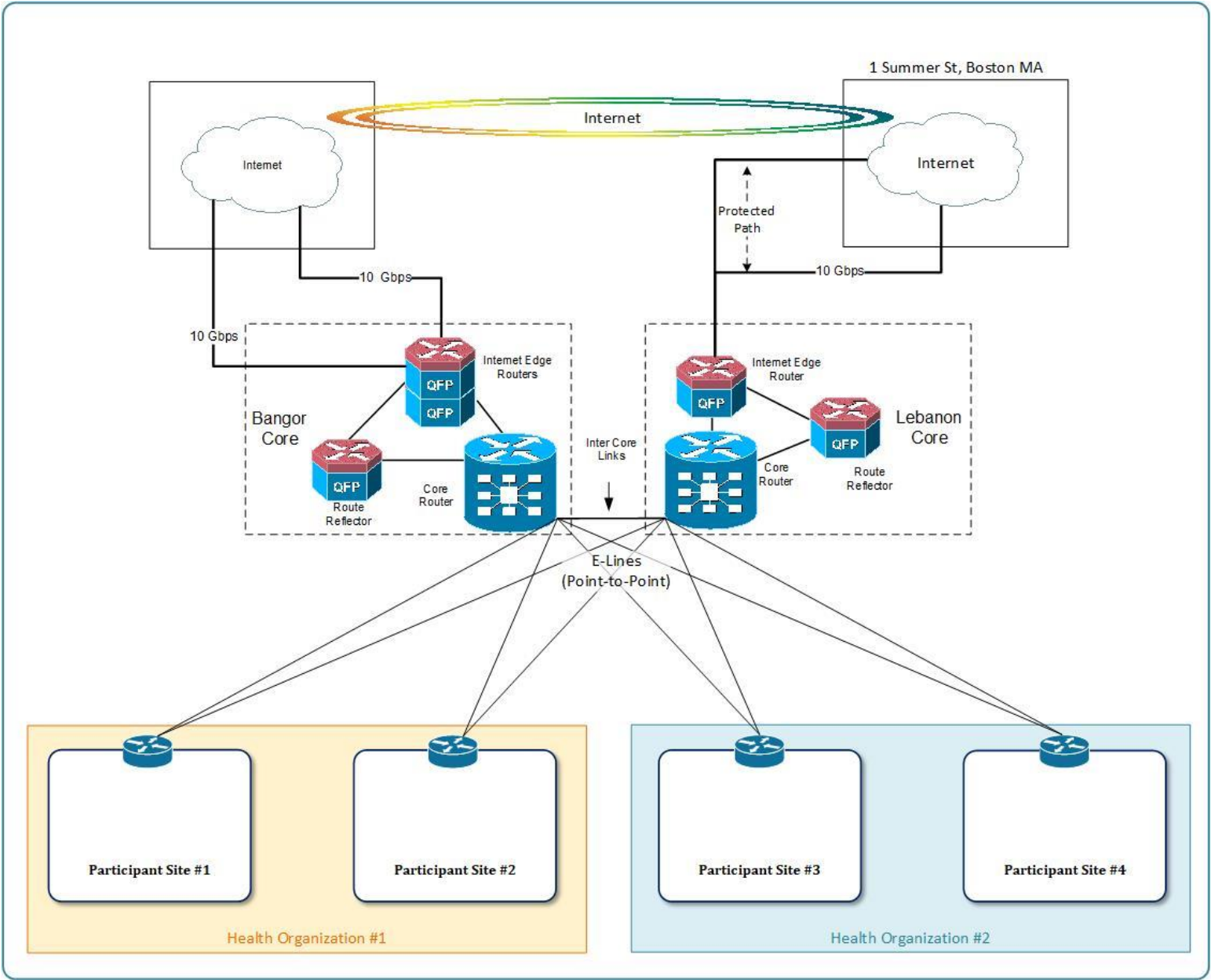
- 16.6.1 Costs may include, among other things, monthly recurring costs, non-recurring costs, taxes and fees, the termination liability associated with existing contractual obligations, and any additional costs that the HCP may potentially realize based on any given vendor selection.
- 16.6.2 In evaluating Ease of Implementation, the Consortium will consider, among other things, the time to install, the disruption of existing services, the complexity of the installation, HCP requirements proposed by the vendor, and the impact on healthcare operations.

- 16.6.3 With regard to Experience with Vendor, the Consortium will score vendors based on guidance from the Healthcare Connect Fund Order and the following criteria:
- 16.6.3.1 The bid evaluator’s previous experience with the service provider or proposing vendor.
 - 16.6.3.2 References from Customers of the Proposing Vendor for similar projects of the same size and scope.
 - 16.6.3.3 Documentation from the proposing vendor that demonstrates the vendor’s experience with similar projects of the same size and scope.
- 16.6.4 Technical Merit of Proposal scores will be assigned based on how well the proposed solution meets the current Healthcare needs of the HCP. This may include, among other things, service level agreement language, technology description, continuity of network platform, diversity and redundancy in the service provider’s network, diversity from existing services, transport technology, reliability, technical support capabilities, the availability of local technicians and repair garages, scalability, expandability, and future network capabilities.
- 16.6.5 Compliance with HCF Payment Process and Rules, scores will either receive full points or zero points for this criterion, depending on whether the vendor agrees to comply with the process.

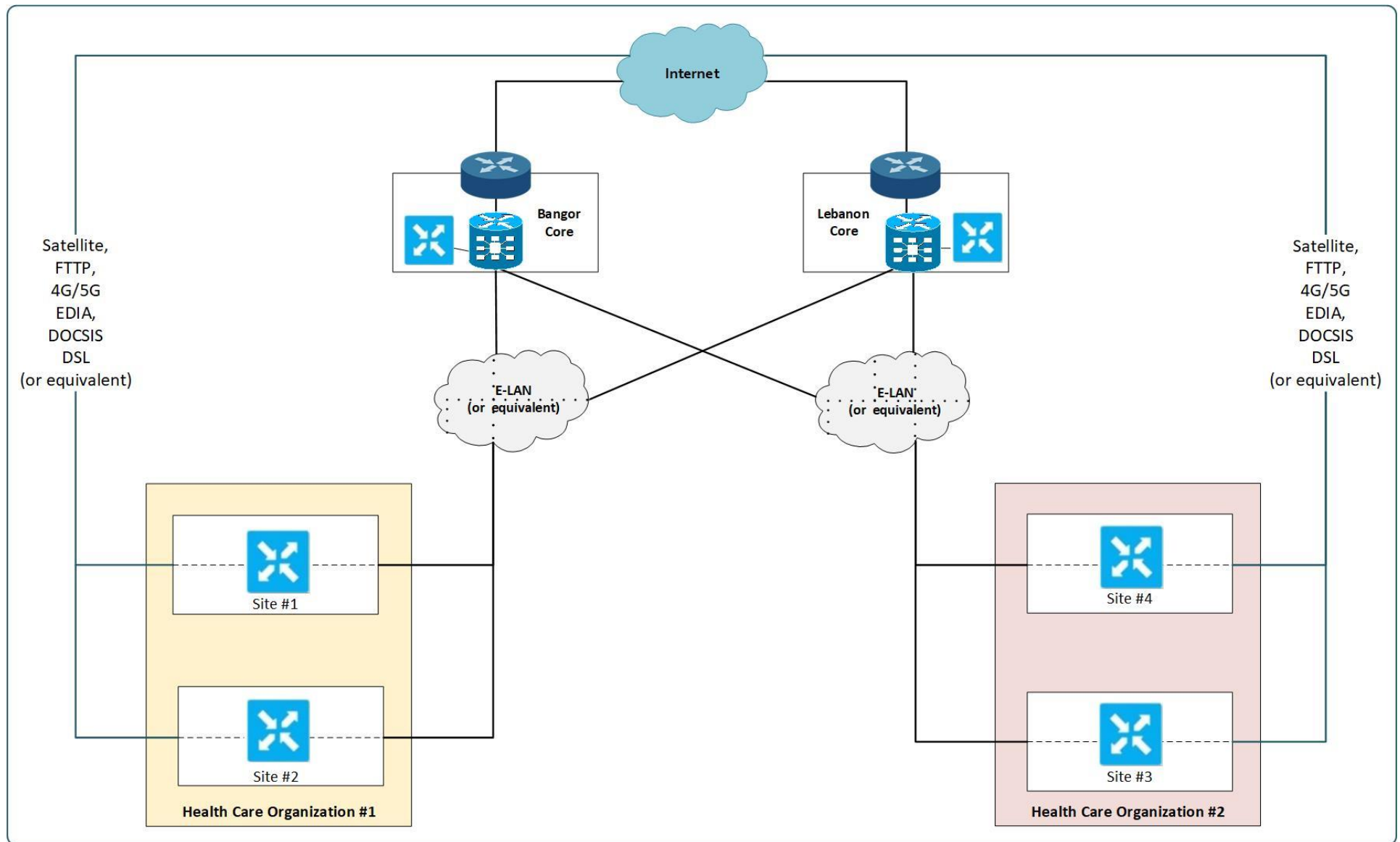
17. Rejection/Negotiation Rights

- 17.1 NETC reserves the right to disqualify any proposals for substantial non-compliance with the terms of this RFP. NETC reserves the right to accept or negotiate the contractual terms of any proposal(s) in response to this RFP.
- 17.2 NETC reserves the right to select multiple service providers, including which circuits each HCP will purchase from selected service providers.

Appendix A: Current New England Telehealth Consortium Transport Diagram

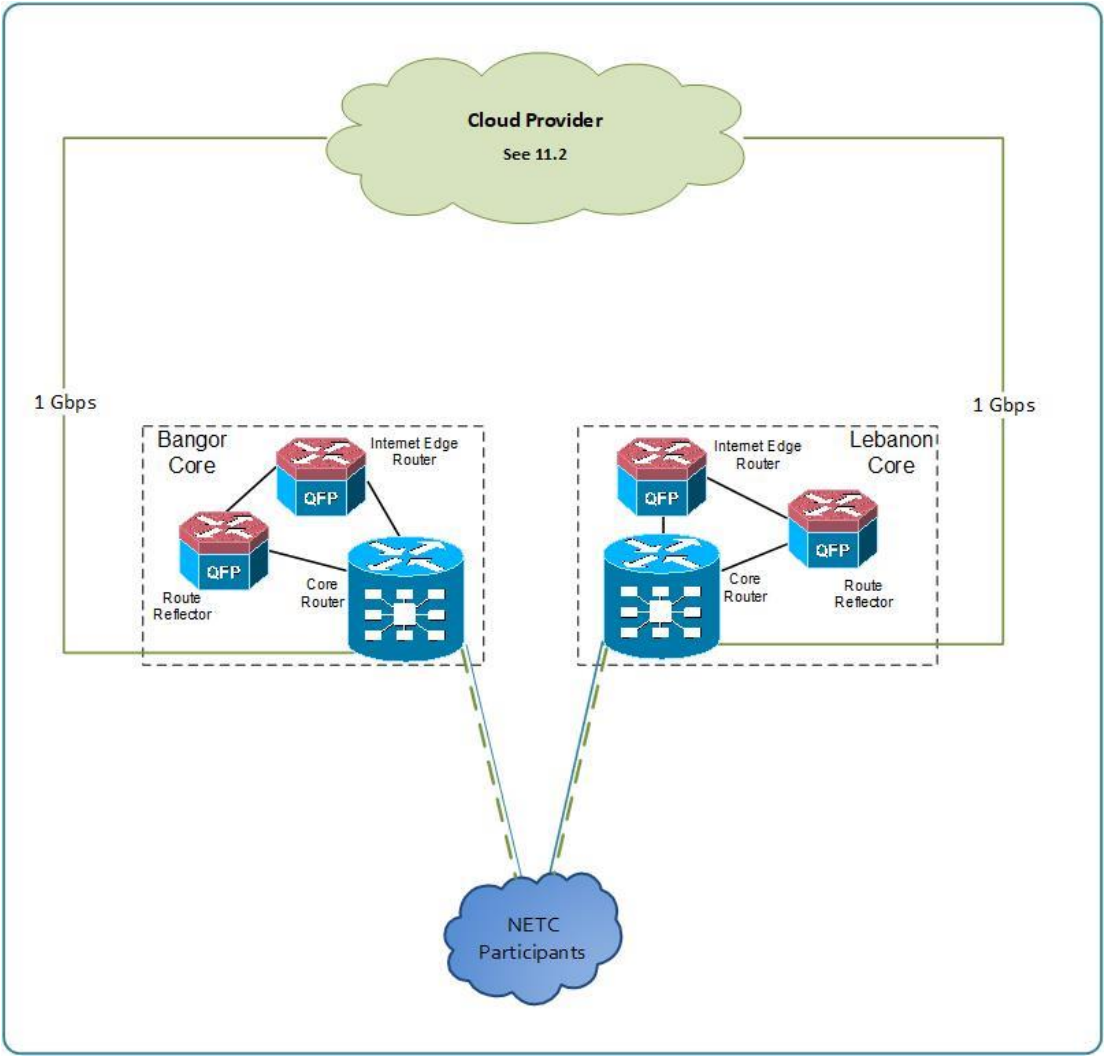


Proposed New England Telehealth Consortium Transport Diagram



Proposed New England Telehealth Consortium Cloud Provider Diagram

Section 11.76 (or equivalent)



Site Name	Address	City	State	HCP
Ammonoosuc Community Health Services/Secured Network Services	775 Industrial Park Road	Littleton	NH	71683
Ammonoosuc Community Health Services/Whitefield	14 Kings Square	Whitefield	NH	45801
Ammonoosuc Community Health Services/Woodsville	79 Swiftwater Road	Woodsville	NH	23799
Ammonoosuc Community Health Services/Warren	333 NH Route 25	Warren	NH	23775
Ammonoosuc Community Health Services/Franconia	1095 Profile Road	Franconia	NH	23644
Ammonoosuc Community Health Services Inc./Ammonoosuc Community Health Services	25 Mt. Eustis Road	Littleton	NH	14540
Amoskeag Health/ProHealth	2 Wall Street	Manchester	NH	94246
Amoskeag Health/Tarrytown Road	184 Tarrytown Road	Manchester	NH	43953
Amoskeag Health/Hollis St	145 Hollis Street	Manchester	NH	43952
Amoskeag Health/Elm St	1245 Elm Street	Manchester	NH	43951
Androscoggin Valley Hospital/Page Hill Road	59 Page Hill Road	Berlin	NH	23560
Bay State Community Services/Mental Health Outpatient Clinic	1120 Hancock Street	Quincy	MA	81410
Bay State Community Services/Administration	222 Forbes Road	Braintree	MA	113716
Block Island Medical Center	6 Payne Road	New Shoreham	RI	50319
Brattleboro Memorial Hospital - Putney Family Medicine	79 Main Street	Putney	VT	28514
Brattleboro Memorial Hospital - Brattleboro Family Healthcare	53 Fairview Street	Brattleboro	VT	26417
Brattleboro Memorial Hospital	17 Belmont Avenue	Brattleboro	VT	23574

Brattleboro Memorial Hospital/Windham Family Practice-West Brattleboro	1027 Western Avenue	Brattleboro	VT	112390
Brattleboro Memorial Hospital/BMH Rehab Services	580 Canal Street	Brattleboro	VT	109242
Brattleboro Memorial Hospital/CCI Data Center	770 Elm Street	Manchester	NH	108014
Brattleboro Retreat	1 Anna Marsh Lane	Brattleboro	VT	23575
Calais Community Hospital/Baileyville Health Services	71 Broadway Street	Baileyville	ME	53861
Calais Community Hospital	24 Hospital Ln	Calais	ME	23595
Calais Community Hospital/Admin Office	18 Palmer St	Calais	ME	112873
Capital Region Health Care/Concord Regional Visiting Nurse Association (CRVNA)	30 Pillsbury St	Concord	NH	64443
Capital Region Health Care/Concord Hospital Records Center	10 Ferry Street	Concord	NH	64441
Capital Region Health Care/Admin Office	49 South Main St	Concord	NH	63829
Capital Region Health Care/Family Tree Health Care - Warner	2 East Main Street	Warner	NH	63828
Capital Region Health Care/Family Tree Health Care - Hopkinton	19 Farrington Corner Road	Hopkinton	NH	63827
Capital Region Health Care/Family Health Center - Hillsboro	15 Antrim Road	Hillsboro	NH	63826
Capital Region Health Care/Epson Family Medicine	1990 Dover Road	Epsom	NH	63825
Capital Region Health Care/CH Center for Urologic Care	240 South Main Street	Wolfeboro	NH	63824
Capital Region Health Care/Cardiac Associates - Laconia	85 Spring Street Suite 2A1	Laconia	NH	63822

Capital Region Health Care/Hillside Medical Park	14 Maple St	Gilford	NH	44641
Capital Region Health Care/Laconia Clinic	724 N Main St	Laconia	NH	34353
Capital Region Health Care/Interlakes Medical Center	238 Daniel Webster Highway	Meredith	NH	34352
Capital Region Health Care/Belmont Family Health	8 Corporate Drive	Belmont	NH	28539
Capital Region Health Care/Franklin Regional Hospital	15 Aiken Ave	Franklin	NH	14113
Capital Region Health Care/Lakes Region General Hospital	80 Highland Street	Laconia	NH	14112
Capital Region Health Care/Primary Care New London	255 Newport Rd Suite A	New London	NH	117899
Cary Medical Center/Pines Washburn Health Center	1260 Main Street	Washburn	ME	28573
Cary Medical Center/Kimball Community Health Center	11 Harmony Lane	Fort Fairfield	ME	28572
Cary Medical Center/St. John Valley Health Center	4 Main St.	Van Buren	ME	26525
Cary Medical Center/Pines Presque Isle FHC	66 Spruce St., Suite 4	Presque Isle	ME	26490
Cary Medical Center/Pines Ophthalmology	647 Main St.	Caribou	ME	26442
Cary Medical Center/Pines Caribou Health Center	74 Access Highway	Caribou	ME	26441
Cary Medical Center	163 Van Buren Road	Caribou	ME	10940
Catholic Medical Center	100 McGregor Street	Manchester	NH	23692
Central Maine Healthcare Corporation/Oxford Networks Data Center	14 Resilient Circle	Brunswick	ME	53304

Central Maine Healthcare Corporation/Caretech Solutions Data Center	2600 W Big Beaver Road	Troy	MI	53303
Central Maine Healthcare Corporation/CMHC Data Center	29 Lowell Street	Lewiston	ME	53301
Central Maine Healthcare Corporation/Rumford Community Home	11 John F Kennedy Lane	Rumford	ME	53300
Central Maine Healthcare Corporation/25 Hospital Drive	25 Hospital Drive	Bridgton	ME	52956
Central Maine Healthcare Corporation/Swift River Family Medicine	430 Franklin Street	Rumford	ME	52944
Central Maine Healthcare Corporation/Spruce Mountain Medical Associates	38 Union Street	Livermore Falls	ME	52942
Central Maine Healthcare Corporation/Poland Community Health Center	364 Maine Street	Poland	ME	52938
Central Maine Healthcare Corporation/North Bridgton Family Practice	14 Wyonegonic Road	Bridgton	ME	52937
Central Maine Healthcare Corporation/Naples Family Practice	410 Roosevelt Trail	Naples	ME	52935
Central Maine Healthcare Corporation/Mechanic Falls Family Practice	22 Pleasant Street	Mechanic Falls	ME	52933
Central Maine Healthcare Corporation/Gray Family Healthy Center	126 Shaker Road	Gray	ME	52931
Central Maine Healthcare Corporation/Fryeburg Family Medicine	253 Bridgton Road	Fryeburg	ME	52930

Central Maine Healthcare Corporation/Elsemore Dixfield Family Medicine	146 Weld Street	Dixfield	ME	52922
Central Maine Healthcare Corporation/15 Hospital Drive	15 Hospital Drive	Bridgton	ME	52916
Central Maine Healthcare Corporation/Central Maine Medical Center	300 Main Street	Lewiston	ME	23989
Central Maine Healthcare Corporation/Bridgton Hospital	10 Hospital Drive	Bridgton	ME	11097
Central Maine Healthcare Corporation/Rumford Hospital	420 Franklin Street	Rumford	ME	10951
Cheshire Medical Center/Dartmouth-Hitchcock Keene- Geriatric Care	312 Marlboro St	Keene	NH	42486
Cheshire Medical Center/Dartmouth-Hitchcock Keene- Doorway	24 Railroad Street	Keene	NH	32892
Cheshire Medical Center/Dartmouth-Hitchcock Keene- Brattleboro Pulmonary and Rheumatology Services	The Medical Office Building at Brattleboro Memorial Hospital, 19 Belmont Ave	Brattleboro	VT	28519
Cheshire Medical Center/Dartmouth-Hitchcock Keene- Audiology and Hearing Aids	448 West Street	Keene	NH	27224
Cheshire Medical Center/Dartmouth-Hitchcock Keene- Winchester	20 Warwick Road	Winchester	NH	26540
Cheshire Medical Center/Dartmouth-Hitchcock Keene- Walpole	11 Westminster Street	Walpole	NH	26527
Cheshire Medical Center/Dartmouth-Hitchcock Keene -- Ophthalmology, Optical Shop and Walk In Care at Colony Mill	Center at Keene -- 149 Emerald St. Unit J	Keene	NH	26463
Cheshire Medical Center Dartmouth Hitchcock Keene Dermatology	51 Railroad Street, Second Floor	Keene	NH	26462
Cheshire Medical Center	580 Court Street	Keene	NH	23665

Cheshire Medical Center/Dartmouth-Hitchcock Keene- Maple Avenue	62 Maple Avenue	Keene	NH	103290
Coos County/Coos County Administration Office	34 County Farm Road	W. Stewartstown	NH	110575
Coos County/Coos County Nursing Home	364 Cates Hill Road	Berlin	NH	110574
Coos County/Coos County Nursing Hospital	136 County Farm Road	W. Stewartstown	NH	110573
Community Health Access Network/Secondary: BC/DR Location	77 Aviation Street	Portsmouth	NH	34351
Community Health Access Network/CHAN	14 Manchester Sq, Ste 235	Portsmouth	NH	118374
Community Health and Counseling Services/Data Center	14 Resilient Circle	Brunswick	ME	68584
Community Health and Counseling Services/Thomas T. Lynn Safe Harbour Crisis Stabilization Unit	67 Acme Road	Brewer	ME	61839
Community Health and Counseling Services/Sojourn	1883 Essex Street	Bangor	ME	61838
Community Health and Counseling Services/Skowhegan	30 High Street	Skowhegan	ME	61837
Community Health and Counseling Services/Machias	15 Kids Corner	Machias	ME	61836
Community Health and Counseling Services/Ellsworth	52 Christian Road	Ellsworth	ME	61835
Community Health and Counseling Services/Caribou	7 Hatch Drive, Suite 120	Caribou	ME	61834
Community Health and Counseling Services/Augusta	24 Stone Street, Suite 201	Augusta	ME	61833
Community Health and Counseling Services/Lincoln	313 Enfield Road	Lincoln	ME	23678
Community Health and Counseling Services/Houlton	2 Water Street, Office #2	Houlton	ME	23660

Community Health and Counseling Services/Dover-Foxcroft	1093 West Main Street	Dover-Foxcroft	ME	23617
Community Health and Counseling Services/Bangor	42 Cedar Street	Bangor	ME	23534
Community Health Centers of the Rutland Region/Cerner Data Center	160 Allen Street	Rutland	VT	61201
Community Health Centers of the Rutland Region/Shorewell Community Health Center	2987 VT Route 22A	Shoreham	VT	40435
Community Health Centers of the Rutland Region/Pediatrics	1 General Wing Road	Rutland	VT	35263
Community Health Centers of the Rutland Region/Community Health Center	69 Allen St.	Rutland	VT	26495
Community Health Centers of the Rutland Region/Mettowee Valley Family Health Center	278 Vermont Route 149	West Pawlet	VT	23783
Community Health Centers of the Rutland Region/Castleton Family Health Center	275 Route 30 North	Bomoseen	VT	14222
Community Health Centers of the Rutland Region/Brandon Medical Center	420 Grove Street	Brandon	VT	14221
Community Health Centers of the Rutland Region/Rutland Community Health Center-Stratton Road	215 Stratton Road	Rutland	VT	14213
Community Health Centers of the Rutland Region/Community Health North	231 North Main Street	Rutland	VT	111006
Community Health Centers of the Rutland Region/Allen Pond Health Center	71 Allen Street, Suite 403	Rutland	VT	110992

Community Health Centers of the Rutland Region/Financial Services	71 Allen Street, Suite 402	Rutland	VT	110991
Community Health Centers of the Rutland Region/Administration	71 Allen Street, Suite 101	Rutland	VT	110990
Community Health Services Windsor	503 Windsor Avenue	Windsor	CT	41477
CHS Hartford	500 Albany Avenue	Hartford	CT	40305
North Country Health Consortium/Coos County Family Health Services - 73 Main	73 Main Street	Berlin	NH	50540
Coos County Family Health Services/Gorham	2 Broadway Avenue	Gorham	NH	23650
North Country Health Consortium/Coos County Family Health Services - Administration	54 Willow Street	Berlin	NH	23564
Coos County Family Health Services/Page Hill	59 Page Hill Road	Berlin	NH	23563
North Country Health Consortium/Coos County Family Health Services - 133 Pleasant	133 Pleasant Street	Berlin	NH	23562
Coos County Family Health Services/Colebrook Medical	6 First Street	Colebrook	NH	115187
Copley Hospital/Tamarack Rehabilitation	109 Professional Dr. Suite 3	Morrisville	VT	96013
Copley Hospital/Mansfield Orthopedics at Waterbury	6 North Main Street	Waterbury	VT	39769
Copley Hospital/Hardwick Rehabilitation	88 High Street	Hardwick	VT	32856
Copley Hospital/Mansfield Orthopedics at Morrisville	555 Washington Highway	Morrisville	VT	32853
Copley Hospital/Copley Hospital	528 Washington Highway	Morrisville	VT	10626
Counseling Service of Addison County	109 Catamount Park	Middlebury	VT	26470

Dartmouth-Hitchcock/DMHC Datacenter	44 Lafayette St	Lebanon	NH	68744
Dartmouth-Hitchcock/CCI Datacenter	25 Concord St	Manchester	NH	68743
Dartmouth-Hitchcock/Upper Connecticut Valley Hospital	181 Corliss Lane Road	Colebrook	NH	18321
Dartmouth-Hitchcock/Southwestern Vermont Health Care	100 Hospital Drive	Bennington	VT	14769
Dartmouth-Hitchcock/Weeks Medical Center	173 Middle Street	Lancaster	NH	14566
Cottage Hospital	90 Swiftwater Road	Woodsville	NH	11069
Dartmouth-Hitchcock/Norris Cotton Cancer Center North	1080 Hospital Drive	St. Johnsbury	VT	109519
Dartmouth-Hitchcock/Bedford Medical Park Admin	9 Washington Place	Bedford	NH	109518
Dartmouth-Hitchcock Medical Center	1 Medical Center Drive	Lebanon	NH	10271
Down East Community Hospital/Rehabilitation Services	76 Dublin Street	Machias	ME	61941
Down East Community Hospital/Arnold Memorial Medical Center	70 Snare Creek Lane	Jonesport	ME	36144
Down East Community Hospital/Reid Emery Medical	229 Main Street	Machias	ME	32421
Down East Community Hospital/Milbridge Medical Center	24 School Street	Milbridge	ME	23693
Down East Community Hospital/Down East Community Hospital	11 Hospital Drive	Machias	ME	23686
Down East Community Hospital/Down East Health Center	1031 Main Street	East Machias	ME	105951
Eastern Maine Healthcare Systems/Northern Light Rehabilitation Somesville	1049 Main Street	Mount Desert	ME	71327

Eastern Maine Healthcare Systems/Northern Light Rehabilitation Ellsworth	65 Church Street	Ellsworth	ME	71326
Eastern Maine Healthcare Systems/Northern Light Podiatry Ellsworth	318 Main Street	Ellsworth	ME	71325
Eastern Maine Healthcare Systems/Visiting Nurses & Hospice of Aroostook - Houlton (Temp)	2 Water Street, Suite 1	Houlton	ME	68583
Eastern Maine Healthcare Systems/TAMC - Mars Hill Health Center (Temp)	106 Main Street	Mars Hill	ME	68359
Eastern Maine Healthcare Systems/Northern Light Continuing Care Mars Hill	15 Highland Ave	Mars Hill	ME	68358
Eastern Maine Healthcare Systems/Northern Light Work Health Pittsfield	125 Main Street	Pittsfield	ME	68357
Eastern Maine Healthcare Systems/NLH - Bangor ON Datacenter	60 Summer Street	Bangor	ME	65088
Eastern Maine Healthcare Systems/NLH - Brunswick ON Datacenter	14 Resilient Drive	Brunswick	ME	49490
Eastern Maine Healthcare Systems/Northern Light Primary Care Stonington	354 Airport Road	Stonington	ME	49485
Eastern Maine Healthcare Systems/Northern Light Primary Care Castine	102 Court Street	Castine	ME	49483
Eastern Maine Healthcare Systems/Northern Light Primary Care and Rehabilitation Bucksport	58 Main Street	Bucksport	ME	49482

Eastern Maine Healthcare Systems/Northern Light Acadia Hospital	268 Stillwater Avenue	Bangor	ME	49476
Eastern Maine Healthcare Systems/Northern Light Acadia Healthcare Rockland	91 Camden Street, Suite 104	Rockland	ME	49475
Eastern Maine Healthcare Systems/Northern Light Acadia Healthcare Belfast	23 Mill Lane	Belfast	ME	49474
Eastern Maine Healthcare Systems/Northern Light Primary Care Southwest Harbor	45 Herrick Road	Southwest Harbor	ME	26518
Eastern Maine Healthcare Systems/Northern Light Primary Care Sangerville	22 Haley Court	Sangerville	ME	26504
Eastern Maine Healthcare Systems/Northern Light Sebasticook Valley Hospital	447 North Main Street	Pittsfield	ME	26485
Eastern Maine Healthcare Systems/Northern Light Mercy Hospital	175 Fore River Parkway	Portland	ME	23718
Eastern Maine Healthcare Systems/Northern Light Primary Care Milo	135 Park Street	Milo	ME	23697
Eastern Maine Healthcare Systems/Northern Light Primary Care and Rehabilitation Madison	344 Lakewood Road	Madison	ME	23691
Eastern Maine Healthcare Systems/Northern Light Primary Care and Rehabilitation Gouldsboro	37 Clinic Road	Gouldsboro	ME	23651
Eastern Maine Healthcare Systems/Northern Light Primary Care Fort Fairfield	23 High Street	Fort Fairfield	ME	23637

Eastern Maine Healthcare Systems/Northern Light Mayo Hospital	897 West Main Street	Dover Foxcroft	ME	23618
Eastern Maine Healthcare Systems/Northern Light Internal Medicine Dexter	41 High Street	Dexter	ME	23613
Eastern Maine Healthcare Systems/Northern Light Primary Care Corinth	492 Main Street	Corinth	ME	23607
Eastern Maine Healthcare Systems/Northern Light Primary Care Clinton	1309 Main Street	Clinton	ME	23605
Eastern Maine Healthcare Systems/Northern Light Primary Care and Walk in Clinic Caribou	118 Bennett Drive	Caribou	ME	23601
Eastern Maine Healthcare Systems/NLH - Cianchette Building	43 Whiting Hill Road	Brewer	ME	23578
Eastern Maine Healthcare Systems	489 State Street	Bangor	ME	23535
Eastern Maine Healthcare Systems/Northern Light Primary Care Pittsfield	470 Somerset Avenue	Pittsfield	ME	23472
Eastern Maine Healthcare Systems/Northern Light Primary Care Newport	Triangle Plaza, 8 Main Street	Newport	ME	23448
Eastern Maine Healthcare Systems/Northern Light Blue Hill Hospital	57 Water Street	Blue Hill	ME	13663
Eastern Maine Healthcare Systems/Northern Light Inland Hospital	200 Kennedy Memorial Drive	Waterville	ME	13641
Eastern Maine Healthcare Systems/Northern Light Charles A. Dean Hospital	364 Pritham Ave	Greenville	ME	13640

Eastern Maine Healthcare Systems/Northern Light Maine Coast Hospital	50 Union Street	Ellsworth	ME	11526
Eastern Maine Healthcare Systems/Northern Light AR Gould Hospital	140 Academy Street	Presque Isle	ME	10801
Eastport Health Care/Calais	55 Franklin Street	Calais	ME	27217
Eastport Health Care/Machias	160 Dublin Street	Machias	ME	26468
Eastport Health Care/Eastport	30 Boynton Street	Eastport	ME	26451
Edward M. Kennedy Community Health Center, Inc./Milford	41 Cape Road	Milford	MA	77485
Edward M. Kennedy Community Health Center, Inc./Tacoma St	19 Tacoma Street	Worcester	MA	77271
Edward M. Kennedy Community Health Center, Inc./North High School	140 Harrington Way	Worcester	MA	110271
Edward M. Kennedy Community Health Center, Inc./Burncoat High School	135 Burncoat St	Worcester	MA	110270
Edward M. Kennedy Community Health Center, Inc./Roosevelt Elementary School (Dental only)	1006 Grafton St	Worcester	MA	109121
Edward M. Kennedy Community Health Center, Inc./Worcester Technical School	1 Officer Manny Familia	Worcester	MA	109120
Edward M. Kennedy Community Health Center, Inc./Norrbach Avenue School (Dental only)	44 Malden St	Worcester	MA	109117
Edward M. Kennedy Community Health Center, Inc./Framingham High School	115 A St	Framingham	MA	109114
Edward M. Kennedy Community Health Center, Inc./Lincoln Street	605 Lincoln Street	Worcester	MA	109112

Edward M. Kennedy Community Health Center, Inc./Waverly St.	354 Waverly Street	Framingham	MA	109110
Exeter Hospital/Administrative Offices	4 Alumni Drive	Exeter	NH	55197
Exeter Hospital/Core Physicians & Exeter Hospital Corporate Offices	7 Holland Way	Exeter	NH	54474
Exeter Hospital/Exeter Hospital	5 Alumni Drive	Exeter	NH	54462
Fair Haven Community Health Clinic Inc./150 Sargent Dr	150 Sargent Dr	New Haven	CT	95541
Fair Haven Community Health Clinic Inc./Branford	221 West Main Street	Branford	CT	70856
Fair Haven Community Health Clinic Inc./Bella Vista	339 Eastern Street	New Haven	CT	65561
Fair Haven Community Health Clinic Inc./50 Grand Ave	50 Grand Ave	New Haven	CT	65558
Fair Haven Community Health Clinic Inc./374 Grand Ave	374 Grand Ave	New Haven	CT	65556
Fish River Rural Health - Fort Kent Dental	12 Bolduc Avenue	Fort Kent	ME	46163
Fish River Rural Health/Fort Kent Health Center	3 Mountain View Drive	Fort Kent	ME	23639
Fish River Rural Health - Eagle Lake Health Center	10 Carter Street	Eagle Lake	ME	17159
Generations Family Health Center/Danielson	42 Reynolds Street	Danielson	CT	39470
Generations Family Health Center/Putnam	202 Pomfret Street	Putnam	CT	39469
Generations Family Health Center/Willimantic	40 Mansfield Avenue	Willimantic	CT	39466
Generations Family Health Center/Norwich	330 Washington Street Suite 510	Norwich	CT	39451
Grafton County/Grafton County Nursing Home	3855 Dartmouth College Highway	North Haverhill	NH	110953

Grafton County/Grafton County Commissioners Ofc	3855 Dartmouth College Highway, Suite #1	North Haverhill	NH	110570
Health Access Network/West Enfield	47 Bridge Street	West Enfield	ME	53934
Health Access Network/Millinocket	24 Balsam Drive	Millinocket	ME	53933
Health Access Network/Medway	1930 Medway Road	Medway	ME	53932
Health Access Network/Lincoln	175 West Broadway	Lincoln	ME	53931
Health Access Network/Lee	21 Winn Road	Lee	ME	53930
Health Access Network/Dental	9 Main Street, Suite B	Lincoln	ME	53929
Houlton Regional Hospital	20 Hartford Street	Houlton	ME	13319
HowardCenter/Data Center III	885 South Barre Road	Barre	VT	65197
HowardCenter/Data Center II	21 Gregory Dr, Suite #165	South Burlington	VT	49472
HowardCenter/WestView House	50 S Willard St	Burlington	VT	49470
HowardCenter/The ARCh Team	208 Hurricane Lane Suite 103	Williston	VT	49469
HowardCenter/Street Outreach	215 College St	Burlington	VT	49468
HowardCenter/Pine Street Counseling Center	855 Pine St	Burlington	VT	49466
HowardCenter/Monroe Place	29 N Champlain St	Burlington	VT	49464
HowardCenter/Avenue 7	711 Riverside Ave	Burlington	VT	49461
HowardCenter/Records Retention Facilities	75 Ethan Allen Drive	South Burlington	VT	46593
HowardCenter/Chittenden Clinic	75 San Remo Drive	South Burlington	VT	46592
HowardCenter/St. Albans	172 Fairfield Street	St. Albans	VT	28536
HowardCenter/Park Street Program	71 Park Street	Rutland	VT	28534
HowardCenter/Fay Honey Knopp School	77 Park Street	Rutland	VT	28533
HowardCenter/Administration	208 Flynn Ave, Suite 3J	Burlington	VT	26797
HowardCenter/Jean Garvin School	55 Day Lane	Williston	VT	26539
HowardCenter/Developmental Services	102 S Winooski Ave	Burlington	VT	26435
HowardCenter/Safe Recovery	45 Clarke St	Burlington	VT	26433
HowardCenter/Children Youth and Family Services	1138 Pine St	Burlington	VT	26430

HowardCenter/Act One Bridge	184 Pearl St	Burlington	VT	26428
HowardCenter/Pine Street Counseling Center (Flynn Ave)	300 Flynn Ave	Burlington	VT	23593
Huggins Hospital/Back Bay Rehabilitation	90 Mill Street	Wolfeboro	NH	23795
Huggins Hospital/Tamworth Family Medicine	577 White Mountain Highway	Tamworth	NH	23769
Huggins Hospital/Alton Family Medicine	27 New Durham Road	Alton	NH	23524
Huggins Hospital/Ossipee Family Medicine	3 Water Village Road	Ossipee	NH	23468
Huggins Hospital/Moultonborough Family Medicine	984 Whittier Highway	Moultonborough	NH	23444
Huggins Hospital	240 South Main Street	Wolfeboro	NH	18312
Islands Community Medical Services	15 Medical Center Loop	Vinalhaven	ME	15028
Katahdin Valley Health Center/Patten Administration	529 South Patten Road	Patten	ME	53612
Katahdin Valley Health Center/Brownville	180 Main Rd.	Brownville	ME	53608
Katahdin Valley Health Center/Millinocket	50 Summer St.	Millinocket	ME	26474
Katahdin Valley Health Center/Island Falls	1300 Crystal Rd.	Island Falls	ME	26461
Katahdin Valley Health Center/Ashland	33 Walker St.	Ashland	ME	23526
Katahdin Valley Health Center/Houlton	59 Bangor St.	Houlton	ME	17726
Katahdin Valley Health Center/Patten	30 Houlton St.	Patten	ME	14720
Katahdin Valley Health Center/Lincoln	53 Transalpine Rd FL	Lincoln	ME	110081
Lamoille Health Partners/Lamoille Health Behavioral Health & Wellness	607 Washington Hwy	Morrisville	VT	53784

Lamoille Health Partners /Lamoille Health Family Medicine - Cambridge	272 N. Main St, Unit 101	Cambridge	VT	47653
Lamoille Health Partners/Lamoille Health Family Dentistry	66 Morrisville Shopping Plaza, Suite 2	Morrisville	VT	26477
Lamoille Health Partners/Lamoille Health Family Medicine ΓÇô Stowe	1878 Mountain Road	Stowe	VT	23767
Lamoille Health Partners/Lamoille Health Family Medicine ΓÇô Morrisville	609 Washington Hwy	Morrisville	VT	106650
Lamprey Health Care, Nashua	22 Prospect St.	Nashua	NH	42487
Lamprey Health Care/207 S. Main St. Newmarket	207 S. Main Street	Newmarket	NH	34350
Lamprey Health Care, Inc/Administration	14 Elm Street	Newmarket	NH	65033
Lamprey Health Care, Inc/Raymond	128 State Route 27	Raymond	NH	44649
Lamprey Health Care, Inc/Newmarket	207 South Main St.	Newmarket	NH	26480
Alpine Clinic - Franconia	1095 Profile Road	Franconia	NH	67998
Alpine Clinic - North Conway	2936 White Mountain Highway	North Conway	NH	67285
Littleton Regional Healthcare/Plymouth	15 Town West Rd	Plymouth	NH	39820
Littleton Regional Healthcare/Hospital	600 St. Johnsbury Road	Littleton	NH	14560
Littleton Regional Healthcare/Lincoln	33 Railroad St	Lincoln	NH	119506
Littleton Regional Healthcare/Secured Network Services	775 Industrial Park Rd, Littleton equipment rack	Littleton	NH	109434
Littleton Regional Healthcare/Doorway-Littleton	11 Riverglen Lane Suite 100	Littleton	NH	109432
Maine Veterans' Homes/Central	460 Civic Center Dr	Augusta	ME	52038
Maine Veterans' Homes/Brunswick Data Center	14 Resilient Cir	Brunswick	ME	52037

Maine Veterans' Homes/South Paris	477 High St	South Paris	ME	52036
Maine Veterans' Homes/Scarborough	290 US-1	Scarborough	ME	52035
Maine Veterans' Homes/Caribou	163 Van Buren Rd #2	Caribou	ME	52033
Maine Veterans' Homes/Bangor	44 Hogan Rd	Bangor	ME	52032
Maine Veterans' Homes/Augusta	310 Cony Rd	Augusta	ME	52031
Maine Veterans' Homes/Augusta (Heroes Way)	35 Heroes Way	Augusta	ME	109243
MaineGeneral Community Care - Rehabilitation and Long Term Care, Gray Birch	37 Gray Birch Drive	Augusta	ME	52003
MaineGeneral Community Care - Rehabilitation and Long Term Care, Glenridge	40 Glenridge Drive	Augusta	ME	52002
MaineGeneral Medical Center - Women Infants and Children	6 East Chestnut Street	Augusta	ME	46768
MaineGeneral Medical Center - Winthrop Family Medicine	16 Commerce Plaza	Winthrop	ME	46767
MaineGeneral Medical Center - Rehabilitation Services	442 Civic Center Drive	Augusta	ME	46766
MaineGeneral Medical Center - Physical Therapy & Sports Medicine	40 Granite Hill Road	Manchester	ME	46765
MaineGeneral Medical Center - Harold Alfond Center for Cancer Care	361 Old Belgrade Road	Augusta	ME	46762
MaineGeneral Medical Center/Gardiner Family Medicine	5 Central Maine Crossing	Gardiner	ME	46761
MaineGeneral Health/MaineGeneral Medical Center-Maine Dartmouth & Four Seasons FP	4 Sheridan Drive	Fairfield	ME	46760
MaineGeneral Medical Center - Express Care	15 Enterprise Drive	Augusta	ME	46759
MaineGeneral Health/MaineGeneral Medical Center - Augusta Campus	35 Medical Center Parkway	Augusta	ME	46757

MaineGeneral Medical Center/Division of Mental Health and Substance Abuse Services	9 Green Street	Augusta	ME	46756
MaineGeneral Health/MaineGeneral Medical Center--Thayer Campus	149 North Street	Waterville	ME	26533
MaineHealth/WCMP Physical & Integrative Medicine	37 Mortland Road	Searsport	ME	93808
MaineHealth/SMHC Internal Medicine	72 Main Street	Kennebunk	ME	93806
MaineHealth/Quarry Hill	30 Community Drive	Camden	ME	93805
MaineHealth/Maine Behavioral Healthcare	12 Union Street	Rockland	ME	93803
MaineHealth/Knox Center	6 White Street	Rockland	ME	93800
MaineHealth/Dr. Robert Laurence	760 Commercial Street	Rockport	ME	93794
MaineHealth/Dr. Charles Kava	68 Ben Paul Lane	Rockport	ME	93793
MaineHealth/Southern Maine Health Care (1137 Main St B101)	1137 Main St B101	Sanford	ME	66806
MaineHealth/Pen Bay Women's Health Center	3 Glen Cove Drive, Suite 1	Rockport	ME	66800
MaineHealth/Arrowsmith Data Center	40 Belvedere Road	Damariscotta	ME	66345
MaineHealth/Maine Behavioral Healthcare (78 Atlantic Place)	78 Atlantic Place	South Portland	ME	66341
MaineHealth/Waldoboro Family Medicine	27 Mill Street	Waldoboro	ME	66334
MaineHealth/Penobscot Bay YMCA	116 Union Street	Rockport	ME	66314
MaineHealth/Maine Medical Partners Otolaryngology (55 Main Street)	55 Main Street	Bridgton	ME	66304
MaineHealth/Lincolnton Regional Health Center	2399 Atlantic Highway	Lincolnton	ME	66299
MaineHealth/Health Connections	163 Northport Avenue	Belfast	ME	66286

MaineHealth/Donald S Walker Health Center	43 West Main St	Liberty	ME	66283
MaineHealth/Maine Behavioral Healthcare (66 Baribeu Drive)	66 Baribeu Drive	Brunswick	ME	65863
MaineHealth/Maine Behavioral Healthcare (31 Beach Street)	31 Beach Street	Saco	ME	65862
MaineHealth/Maine Behavioral Healthcare (236 Gannett Drive)	236 Gannett Drive	South Portland	ME	65861
MaineHealth/Maine Behavioral Healthcare (165 Lancaster Street)	165 Lancaster Street	Portland	ME	65860
MaineHealth/Maine Behavioral Healthcare (11 Medical Center Drive)	11 Medical Center Drive	Brunswick	ME	65859
MaineHealth/MMP Administration (300 Southborough)	300 Southborough	South Portland	ME	65600
MaineHealth/Surgical Skin Associates	731 Commercial Street	Rockport	ME	65576
MaineHealth/Data Center	360 Old County Road	Rockland	ME	61811
MaineHealth/Southern Maine HealthCare/Waterboro	10 Goodall Drive	East Waterboro	ME	61809
MaineHealth/Mid Coast Speech and Hearing Center	6 Madelyn Ln.	Rockport	ME	61808
MaineHealth/Henrietta D. Goodall Hospital, Inc.	25 June Street	Sanford	ME	61806
MaineHealth/Maine Behavioral Healthcare, Biddeford	2 Springbrook Drive	Biddeford	ME	51300
MaineHealth/Maine Behavioral Healthcare (474 Main Street)	474 Main Street	Springvale	ME	51297
Penobscot Bay Medical Center/Central Data Center	409 Old Country Road	Rockland	ME	26824
MaineHealth/Midcoast Mental Health	15 Midcoast Drive	Belfast	ME	26409
MaineHealth/Maine Behavioral Healthcare, Spring Harbor Hospital	123 Andover Road	Westbrook	ME	23786

MaineHealth/Cancer Care Center of York County	27 Industrial Avenue	Sanford	ME	23736
MaineHealth/MMC - Brighton Campus	335 Brighton Avenue	Portland	ME	23712
MaineHealth/Maine Behavioral Healthcare (576 St. John Street)	576 St. John Street	Portland	ME	23710
MaineHealth/Maine Medical Center	22 Bramhall Street	Portland	ME	23707
MaineHealth/Miles Memorial Hospital	35 Miles Street	Damariscotta	ME	23609
Mid Coast-Parkview Health/MID COAST SENIOR HEALTH	58 Baribeau Dr	Brunswick	ME	23584
Mid Coast-Parkview Health/Mid Coast Hospital	123 Medical Center Drive	Brunswick	ME	23583
Southern Maine Medical Center/1 Medical Center Drive	1 Medical Center Drive	Biddeford	ME	23567
MaineHealth/Stephens Memorial Hospital	181 Main Street	Norway	ME	23458
MaineHealth/Memorial Hospital	3073 White Mountain Highway	North Conway	NH	23457
Waldo County General Hospital/Belfast	118 Northport Avenue	Belfast	ME	16134
MaineHealth/St. Andrews Hospital	6 St. Andrews Lane	Boothbay Harbor	ME	15027
Penobscot Bay Medical Center	6 Glen Cove Drive	Rockport	ME	13829
Mainehealth/St Andrews Village Assisted Living	145 Emery Ln	Boothbay Harbor	ME	65574
Mainehealth/Mainehealth Administration Offices	1 Riverfront Plz	Westbrook	ME	65587
Mainehealth/Maine Medical Partners Mainehealth Cardiology	35 Medical Center Pkwy Ste 101	Augusta	ME	66301
Mainehealth/Stephens Memorial Specialty Clinic	199 Main St	Norway	ME	66328
Mainehealth/Pen Bay Nephrology	3 Glen Cove Dr Ste 3	Rockport	ME	66310
Mainehealth/Smhc Pediatrics	3 Shape Dr	Kennebunk	ME	66321

Mainehealth/Mmp Administration (190 Riverside Street)	190 Riverside St	Portland	ME	65596
Mainehealth/Franklin Health Urology	126 Middle St	Farmington	ME	66284
Mainehealth/Western Maine Pediatrics	193 Main St Ste 9	Norway	ME	66338
Mainehealth/Lincoln Medical Partners- Family Practice	592 W Main St	Waldoboro	ME	66292
Mainehealth/Waldo County Family Practice	9 Fahy St	Belfast	ME	66331
Mainehealth/Wcpm Arthur Jewell Community Health Center	55 Reynolds Rd	Brooks	ME	66336
Mainehealth/Lincoln Medical Partners General Surgery	24 Miles Centerway	Damariscotta	ME	66294
Mainehealth/Lincoln Medical Partners Ophthalmology	71 Main St	Newcastle	ME	66296
Mainehealth/Franklin Memorial Hospital	111 Franklin Health Cmns	Farmington	ME	13480
Mainehealth/Maine Behavioral Healthcare- Counseling And Mental Health	18 Belvedere Rd	Damariscotta	ME	65865
Mainehealth/Western Maine Primary Care, Family Medicine	8 Pikes Hl	Norway	ME	66339
Mainehealth/Mmp Cardiology Rockport	4 Glen Cove Dr Ste 108	Rockport	ME	93804
Mainehealth/Lincoln Medical Partners- Family Medicine	49 Hooper St	Wiscasset	ME	66290
Mainehealth/Southern Maine Health Care- Family Medicine	2 Livewell Dr	Kennebunk	ME	66327
MidState Health Center/MidState Health Center - Bristol	100 Robie Road	Bristol	NH	28549
MidState Health Center/MidState Health Center - Plymouth	101 Boulder Point Drive	Plymouth	NH	23474

Millinocket Regional Hospital Walk-In Care	87 Main Street	East Millinocket	ME	55463
Millinocket Regional Hospital/White Birch Medical Center	899 Central Street	Millinocket	ME	23696
Millinocket Regional Hospital	200 Somerset Street	Millinocket	ME	13932
Mohawk Valley Health System/Medical Group - Waterville Medical Office	358 Madison Street	Waterville	NY	98000
Mohawk Valley Health System/Medical Group - Town of Webb Medical Office	114 South Shore Road	Old Forge	NY	97999
Mohawk Valley Health System/Medical Group - Oneida Medical Office	131 Main Street	Oneida	NY	97998
Mohawk Valley Health System/Medical Group - Little Falls Medical Office	500 E Main St	Little Falls	NY	97997
Mohawk Valley Health System/Medical Group - Boonville Medical Office	13460 State Route 12	Boonville	NY	97996
Mohawk Valley Health System/Medical Group - Barneveld Medical Office	7980 State Route 12	Barneveld	NY	97995
Mohawk Valley Health System/MVHS Main Data Center	30 Campion Road	New Hartford	NY	97359
Mohawk Valley Health System/St. Luke's Campus	1656 Champlin Avenue	Utica	NY	97358
Mohawk Valley Health System/St. Elizabeth Campus	2209 Genesee Street	Utica	NY	23814
Mohawk Valley Health System/Hamilton Dialysis Center	10 Eaton Street	Hamilton	NY	109239
Mount Desert Island Hospital/Trenton Health Center	394 Bar Harbor Road	Trenton	ME	23771

Mount Desert Island Hospital/Southwest Harbor Clinic	16 Community Lane	Southwest Harbor	ME	23756
Mount Desert Island Hospital	10 Wayman Lane	Bar Harbor	ME	14212
Mount Desert Island Hospital/Northeast Harbor Clinic	9 Kimball Road	Northeast Harbor	ME	117475
Mt. Ascutney Hospital & Health Center	289 County Road	Windsor	VT	16637
Mt. Ascutney Hospital & Health Center/Ottawaquechee Health Center	32 Pleasant Street	Woodstock	VT	15899
St. Joseph Healthcare/Bedford Data Center	8 Commerce Dr	Bedford	NH	101317
Maine Sea Coast Mission Acadia Family Center	1 Fernald Point Road	Southwest Harbor	ME	26519
Healthfirst/Church St.	17 Church St	Laconia	NH	115779
Edward M. Kennedy Community Health Center, Inc./Admin	115 Ne Cutoff Bldg 2 Ste 200	Worcester	MA	109122
Fair Haven Community Health Clinic Inc./85 Woolsey	85 Woolsey St	New Haven	CT	65569
Amoskeag Health/Mcgregor St	88 McGregor St	Manchester	NH	65092
Concord Hospital	250 Pleasant St	Concord	NH	11359
Mayo Regional Hospital - Corinth Ems	314 Main St	Corinth	ME	23654
Fair Haven Community Health Clinic Inc./350 Grand Ave	350 Grand Ave	New Haven	CT	65566
Wentworth-Douglass Hospital - Dover	789 Central Ave	Dover	NH	23616
Amoskeag Health/Admin At Canal Street	803 Canal St	Manchester	NH	96357
North Country Hospital	189 Prouty Dr	Newport	VT	14581
Lakes Region Mental Health/Plymouth Office	81 Highland St	Plymouth	NH	98120
Lakes Region Mental Health/LRMH 24 McGrath St	24 McGrath St	Laconia	NH	98119

Lakes Region Mental Health/LRMH 23 Messer St	23 Messer St	Laconia	NH	98116
Lakes Region Mental Health/Emergency & Short Term Services	85 Spring Street	Laconia	NH	98095
HealthFirst SUD/MAT Services	175 Central Street	Franklin	NH	95553
Northern Counties Health Care/Northern Express Care 700 St. Johnsbury	457 Railroad Street	St. Johnsbury	VT	93382
Lakes Region Mental Health/Lakes Regional Mental Health	40 Beacon Street E	Laconia	NH	76351
Mount Desert Island Hospital/Data Center	60 Summer Street	Bangor	ME	72038
MidState Health Center/MidState Health Center - PARC	258 Highland Street, Lower Level	Plymouth	NH	71893
Androscoggin Valley Hospital/Administration	1752 Hutchins Street	Berlin	NH	70730
Androscoggin Valley Hospital/North Country Healthcare Physical Therapy	167 Main Street	Gorham	NH	69828
Androscoggin Valley Hospital/NCH Outreach Clinics	1976 White Mountain Highway, Suite 110B	North Conway	NH	68314
Porter Hospital/PMCTrainingCenter	23 Pond Lane	Middlebury	VT	67811
Northeast Kingdom Human Services, Inc.	1082 Hospital Drive	Saint Johnsbury	VT	62487
St. Mary's Regional Medical Center/Data Center	14 Resilient Circle	Brunswick	ME	60213
HealthReach Community Health Centers/FirstLight Data Center	14 Resilient Circle	Brunswick	ME	55504
North Country Health Consortium/Littleton	262 Cottage Street, Suite 230	Littleton	NH	55342
Northern Counties Health Care/Orleans Dental Center	11 Union Street	Orleans	VT	51891

Androscoggin Valley Hospital/Pain Clinic/Saco River Medical Group	15 Route 302	Glen	NH	50127
Maine Coast Memorial Hospital/Bangor Data Center	60 Summer Street	Bangor	ME	46663
Southwestern Vermont Health Care/Pownal Campus Clinic	7237 Route 7	Bennington	VT	46165
Porter Hospital/Podiatry	76 Court Street	Middlebury	VT	42007
Porter Hospital/Champlain Valley Orthopedics	1436 Exchange Street	Middlebury	VT	35272
Porter Hospital/Catamount Physical Therapy	108 Catamount Park	Middlebury	VT	35271
Northwestern Medical Center/Vermont Technical College	97 North Main St. Suite 300	St. Albans	VT	33906
Northwestern Medical Center/Northwestern Ophthalmology	128 Fisher Pond Road	St. Albans	VT	33905
HealthReach Community Health Centers/Western Maine Family Health Center	16 Depot Street	Livermore Falls	ME	28575
Northern Counties Health Care/Northern Counties Dental Center	151 N. Main Street	Hardwick	VT	28558
Northern Counties Health Care/Hardwick Health Center	Slapp Hill Road	Hardwick	VT	28556
Northern Counties Health Care/Concord Health Center	201 East Main Street	Concord	VT	28554
Mid Vermont ENT/Dorset	51 A Tennis Way	East Dorset	VT	28547
Maine Sea Coast Mission/Hope Health	77 Elm Street, Suite 4	Camden	ME	28546
HealthReach Community Health Centers/Strong Area Health Center	177 N. Main St.	Strong	ME	28531
HealthReach Community Health Centers/Rangeley Family Medicine	42 Dallas Hill Road	Rangeley	ME	28530

HealthReach Community Health Centers/Mt. Abram Regional Health Center	25 Depot St.	Kingfield	ME	28529
HealthReach Community Health Centers/Bethel Family Health Center	32 Railroad St.	Bethel	ME	28528
Androscoggin Valley Hospital/UCVH ASA	ASA Practice Suite, 181 Corliss Lane	Colebrook	NH	28513
Harrington Family Center	50 East Main	Harrington	ME	27253
Maine Sea Coast Mission/Colket Data Center	6 Old Firehouse Lane	Northeast Harbor	ME	27243
Southwestern Vermont Health Care/Deerfield Valley Medical Center	30 VT Route 100 South	Wilmington	VT	27019
Southwestern Vermont Health Care/Northshire Medical Center	5957 Main Street - Route 7A	Manchester Center	VT	27018
MaineGeneral Health/MaineGeneral Medical Center-Winthrop Commerce Ctr	149 Main Street	Winthrop	ME	26543
HealthReach Community Health Centers/FairPoint Data Center	770 Elm Street	Manchester	NH	26532
HealthReach Community Health Centers/Hathaway Creative Ctr	10 Water Street, Suite 305	Waterville	ME	26531
Porter Hospital/Little City Family Medicine	10 North Street	Vergennes	VT	26526
Northeast Kingdom Human Services/St. Johnsbury	2225 Portland Street	Saint Johnsbury	VT	26502
Northeast Kingdom Human Services/Derby	181 Crawford Road	Derby	VT	26481
Porter Hospital/Addison Family Medicine	82 Catamount Park	Middlebury	VT	26472
Counseling Service of Addison County - Main Street	89 Main Street	Middlebury	VT	26471
Health First FHC ΓÇô Laconia Site	22 Strafford Street	Laconia	NH	26465

Health FirstFamily Care Center -- Franklin	841 Central Street	Franklin	NH	26456
Porter Hospital/Neshobe Family Medicine	61 Court Drive	Brandon	VT	26415
HealthReach Community Health Centers/Belgrade Regional Health Center	4 Clement Way	Belgrade	ME	26410
Northern Counties Health Care	165 Sherman Drive	St. Johnsbury	VT	23763
Redington-Fairview General Hospital/46 Fairview Avenue	46 Fairview Ave	Skowhegan	ME	23749
St. Croix Regional Family Health Clinic - Princeton	136 Mill Street	Princeton	ME	23725
Maine Sea Coast Mission - Mobile Clinic - Monhegan	2 Odom Way	Monhegan	ME	23698
Penobscot Valley Hospital Wellness Center	27 Main Street	Lincoln	ME	23680
Androscoggin Valley Hospital/Weeks ENT	278 Main Street	Lancaster	NH	23672
Maine Sea Coast Mission - Mobile Clinic - Isle au Haut	24 Visits Isle au Haut	Isle au Haut	ME	23661
Androscoggin Valley Hospital/Pulmonary, Sleep and ENT Clinics	173 Middle Street	Lancaster	NH	23648
Androscoggin Valley Hospital/Lab Broadway Street	Lab Suite, 2 Broadway Street	Gorham	NH	23647
Northwestern Medical Center/Georgia	927 Ethan Allen Highway	Georgia	VT	23646
Maine Sea Coast Mission - Mobile Clinic - Cranberry Isles	24 Visits Cranberry Isles	Cranberry Isles	ME	23608
St. Croix Regional Family Health - Calais	5 Lowell Street, Suite 4	Calais	ME	23597
Androscoggin Valley Hospital/Lab Pleasant Street	Lab Suite, 133 Pleasant Street	Berlin	NH	23559

Redington-Fairview General Hospital/Norridgewock Health Center	87 Mercer Road	Norridgewock	ME	23455
HealthReach Community Health Centers/Sheepscot Valley Health Center	47 Main	Coopers Mills	ME	15001
HealthReach Community Health Centers/Richmond Area Health Center	24 Gardiner Street	Richmond	ME	15000
HealthReach CHC/Madison Area Health Center	8 South Main Street	Madison	ME	14997
HealthReach Community Health Centers/Lovejoy Health Center	7 School St. Suite 1	Albion	ME	14996
HealthReach CHC/Bingham Area Health Center	237 Main Street	Bingham	ME	14995
Penobscot Valley Hospital - 7 Transalpine Road	7 Transalpine Road	Lincoln	ME	14014
Maine Sea Coast Mission - Mobile Clinic - Matinicus	24 Visits Matinicus	Matinicus	ME	13585
Maine Sea Coast Mission - Swans Island	Mill Pond Health Center, 235 Minturn Road	Swans Island	ME	13584
Maine Sea Coast Mission - Mobile Clinic - Frenchboro	24 Visits Frenchboro	Frenchboro	ME	13583
Northern Counties Health Care/Island Pond Health Center	82 Maple Street	Island Pond	VT	11737
Northern Counties Health Care/Danville Health Center	26 Cedar Lane	Danville	VT	11736
Porter Hospital	115 Porter Drive	Middlebury	VT	10437
North Country Hospital/Wellness Center	1734 Crawford Farm Road	Newport	VT	14582
North Country Hospital/Primary Care Barton/Orleans	488 Elm Street	Barton	VT	14580

Northeastern Vermont Regional Hospital/Comprehensive Care Clinic	1091 Hospital Drive	Saint Johnsbury	VT	95131
Northeastern Vermont Regional Hospital/ENT (Ear,Nose, Throat) Clinic	1080 Hospital Dr - Suite 5	Saint Johnsbury	VT	65188
Northeastern Vermont Regional Hospital/St. Johnsbury Pediatrics	97 Sherman Dr - Upper Level	Saint Johnsbury	VT	47569
Northeastern Vermont Regional Hospital/Sleep Lab	55 Sherman Dr - Lower Level	Saint Johnsbury	VT	47568
Northeastern Vermont Regional Hospital/Occupational Medicine	1290 Hospital Dr - Suite 3	Saint Johnsbury	VT	47567
Northeastern Vermont Regional Hospital/Kingdom Internal Medicine	714 Breezy Hill Rd	Saint Johnsbury	VT	47566
Northeastern Vermont Regional Hospital/Surgical Services (Suite 2)	1290 Hospital Dr - Suite 2	Saint Johnsbury	VT	47562
Northeastern Vermont Regional Hospital/Danielson Surgical Associates, Woodsville	90 Swiftwater Rd, Danielson Surgical Associates suite	Woodsville	NH	40437
Northeastern Vermont Regional Hospital/NVRH Corner Medical	195 Industrial Parkway - Suite 1	Lyndonville	VT	23684
Northeastern Vermont Regional Hospital/NVRH	1315 Hospital Dr	Saint Johnsbury	VT	16042
Northern Human Services/Secured Network Services	775 Industrial Park Road	Littleton	NH	65171
Northern Human Services/Groveton Mental Health Center	69 Brooklyn Street	Groveton	NH	17771
Northern Human Services/Conway Admin (Accounting Offices)	71 Hobbs Street	Conway	NH	17758
Northern Human Services/Wolfeboro Mental Health Center	70 Bay Street	Wolfeboro	NH	17757
Northern Human Services/Littleton (White Mountain Mental Health)	29 Maple Street	Littleton	NH	17756

Northern Human Services/Colebrook Mental Health Center	55 Colby Street	Colebrook	NH	17755
Northern Human Services/Conway Mental Health Center	25 West Main Street	Conway	NH	17754
Northern Human Services/Berlin Mental Health Center	3 Twelfth Street	Berlin	NH	17753
Northern Human Services/Conway Administrative Offices	87 Washington St.	Conway	NH	14819
Northern Maine Medical Center - Acadia Family Health Center	460 Main Street	Madawaska	ME	23689
Northern Maine Medical Center	194 East Main St	Fort Kent	ME	23640
Northwestern Counseling & Support Services/Supported Individual Living residence	1 Sully's Way	Saint Albans	VT	46562
Northwestern Counseling & Support Services/Soar Learning Center	178 McGinn Drive	Saint Albans	VT	46561
Northwestern Counseling & Support Services/NCSS Family Center	130 Fisher Pond Road	Saint Albans	VT	46559
Northwestern Counseling & Support Services/Bayview Crisis Bed	48 Lower Newton Street	Saint Albans	VT	46556
Northwestern Counseling & Support Services/Academy of Learning	27 Lower Newton	Saint Albans	VT	46555
Northwestern Counseling & Support Services/22 Upper Welden Street residence	22 Upper Welden Street	Saint Albans	VT	46554
Northwestern Counseling & Support Services/174 North Main Street residence	174 North Main Street	Saint Albans	VT	46553
Northwestern Counseling & Support Services/115 French Hill	115 French Hill	Saint Albans	VT	46552
Northwestern Counseling & Support Services	107 Fisher Pond Road	Saint Albans	VT	26500

Northwestern Medical Center/St. Albans	133 Fairfield Street	Saint Albans	VT	23760
Optimus Health Care/Fairgate Court	138 Stillwater Avenue	Stamford	CT	65632
Optimus Health Care/WIC Program	1450 Barnum Avenue	Bridgeport	CT	65618
Optimus Health Care/Woodland Place	8 Woodland Place	Stamford	CT	64862
Optimus Health Care/Randolph Taylor Community Center	790 Central Avenue	Bridgeport	CT	64854
Optimus Health Care/Datacenter	15 Shattuck Road	ANDOVER	MA	49821
Optimus Health Care/Stamford CHC Shelter	597 Pacific Street	Stamford	CT	41432
Optimus Health Care/Stamford Hospital Outpatient Clinics	1351 Washington Boulevard	Stamford	CT	41425
Optimus Health Care/Stamford Community Health Center	805 Atlantic Street	Stamford	CT	41423
Optimus Health Care/Hollow Community Health Center	82 George Street	Bridgeport	CT	41421
Optimus Health Care/The Chase Wellness Center	1071 East Main Street	Bridgeport	CT	41420
Optimus Health Care/Main Street Pediatrics	3715 Main Street, Suite 200	Bridgeport	CT	41416
Optimus Health Care/Park City Primary Care Center	64 Black Rock Avenue	Bridgeport	CT	41414
Optimus Health Care/Bridgeport Community Health Center	982 East Main Street	Bridgeport	CT	41412
Optimus Health Care/Optimus Health Care, Inc.	471 Barnum Avenue	Bridgeport	CT	41409
Optimus Health Care/Optimus at 305 Boston Ave	305 Boston Ave	Stratford	CT	113159
Optimus Health Care/Optimus at Freeman St	30 Freeman St	Bridgeport	CT	113158
Yale New Haven Health Care/Yale Epic EMR - Howard Ave	732 Howard Ave	New Haven	CT	111594

Yale New Haven Health Care/Yale Epic EMR - Church Street	100 Church St s 1st Floor	New Haven	CT	110661
Oxford County Mental Health Services/Norway	39 Main St.	Norway	ME	65145
Oxford County Mental Health Services/Main Office	150 Congress St.	Rumford	ME	65144
Oxford County Mental Health Services/26 Congress	26 Congress St.	Rumford	ME	65142
Penobscot Community Health Care/Hampden	1 Ammo Park Road	Hampden	ME	95156
Penobscot Community Health Care/Telecom Building	6 Telecom Dr	Bangor	ME	70598
Penobscot Community Health Care/Oxford Networks Data Center Brunswick	14 Resilient Circle	Brunswick	ME	68534
Penobscot Community Health Care/FirstLight DataCenter	60 Summer St	Bangor	ME	65620
Penobscot Community Health Care/Services Center	615 Odlin Rd	Bangor	ME	46702
Penobscot Community Health Care/Administrative Services Center	103 Maine Ave	Bangor	ME	46701
Penobscot Community Health Care/Seaport Community Health Center	53 Schoodic Dr	Belfast	ME	46698
Penobscot Community Health Care/Hope House Health and Living Center	181 Corporate Dr	Bangor	ME	46694
Penobscot Community Health Care/Brewer High School	79 Parkway S	Brewer	ME	46692
Penobscot Community Health Care/Brewer Community School	5 Pendleton St	Brewer	ME	46690

Penobscot Community Health Care/Jackman Community Health Center	376 Main St	Jackman	ME	35448
Penobscot Community Health Care/Winterport Community Health Center	775 N Main St	Winterport	ME	35445
Penobscot Community Health Care/Brewer Medical Center	735 Wilson St	Brewer	ME	35437
Penobscot Community Health Care	1012 Union Street	Bangor	ME	35432
Penobscot Community Health Care/Dental Center - Penobscot Community Health Care - Main Campus	1048 Union St	Bangor	ME	23546
Penobscot Community Health Care/Capehart Community Health Center	86 Davis Rd	Bangor	ME	23544
Penobscot Community Health Care/Helen Hunt Health Center	242 S Brunswick St	Old Town	ME	23463
Regional Medical Center of Lubec/Healthways - Calais	5 Lowell Street	Calais	ME	61361
Regional Medical Center of Lubec/Healthways - East Machias	893 Main Street	East Machias	ME	23624
Regional Medical Center of Lubec/Healthways - Lubec	43 South Lubec Road	Lubec	ME	12553
Richford Health Center/Richford Dental Clinic	44 Main Street, Suite 400	Richford	VT	66819
Richford Health Center/Georgia Health Center	4178 Highbridge Road	Fairfax	VT	33904
Richford Health Center/Fairfax Health Center	1199 Main Street	Fairfax	VT	26524
Richford Health Center/St. Albans Health Center	3 Crest Road	St. Albans	VT	26523

Richford Health Center/Swanton Health Center	26 Canada Street	Swanton	VT	15557
Richford Health Center/Enosburg Health Center	382 Main Street	Enosburg Falls	VT	15556
Richford Health Center/Alburgh Health Center	64 Industrial Park Road	Alburgh	VT	15555
Richford Health Center	44 Main Street, Suite 200	Richford	VT	15268
Richford Health Center/Primary Care	12 Crest Road	St. Albans	VT	113621
Rutland Mental Health Services/RC Headstart	78 Meadow Street	Rutland	VT	28560
Rutland Mental Health Services/CSID	195 Stratton Road	Rutland	VT	27361
Rutland Mental Health Services/Pine Street Location	30 Pine Street	Rutland	VT	26498
Rutland Mental Health Services/Adult Programs	98 Allen Street	Rutland	VT	26497
Rutland Mental Health Services/Court Square Location	7 Court Square	Rutland	VT	26496
Rutland Mental Health Services	78 S. Main Street	Rutland	VT	23729
Rutland Mental Health Services/Human Resources	7 Royce St.	Rutland	VT	119640
Rutland Regional Medical Center/Data Center (off site)	439 West Street	Rutland	VT	18524
Rutland Regional Medical Center	160 Allen Street	Rutland	VT	14215
Sacopee Valley Health Center/Finance	122 South Hiram Road	Hiram	ME	47784
Sacopee Valley Health Center/Optometry	49 Summer Street	Porter	ME	47783
Sacopee Valley Health Center	70 Main Street	Porter	ME	23701
Sebasticook Family Doctors d/b/a HOMETOWN Health Center/Administration	118 Moosehead Trail, Suite 4	Newport	ME	46978
Sebasticook Family Doctors d/b/a HOMETOWN Health Center/Dexter	29 Church Street	Dexter	ME	23615

Sebasticook Family Doctors d/b/a HOMETOWN Health Center/Newport	118 Moosehead Trail, Suite 5	Newport	ME	23454
Sebasticook Family Doctors d/b/a HOMETOWN Health Center/SymQuest Data Center	340 Cumberland Avenue	Portland	ME	109244
Sebasticook Family Doctors d/b/a HOMETOWN Health Center/Data Center	5307 Muhlhauser Rd	Hamilton	OH	107832
Sebasticook Family Doctors d/b/a HOMETOWN Health Center/Nokomis	291 Williams Road	Newport	ME	106414
SolutionHealth/Elliot Charitable Foundation	701 Riverway Place	Bedford	NH	96180
SolutionHealth/Southern NH Medical Center Administrative	22 Cotton Road	Nashua	NH	96178
SolutionHealth/SolutionHealth Pinetree Place	360 NH 101	Bedford	NH	96177
SolutionHealth/Elliot Childcare	450 Massabesic Street	Manchester	NH	96176
SolutionHealth/Southern NH Hospital	8 Prospect Street	Nashua	NH	96172
SolutionHealth/Elliot Hospital	1 Elliot Way	Manchester	NH	96171
South Cove Manor at Quincy Point/South Cove Manor at Quincy Point	288 Washington St	Quincy	MA	97797
Southwest Community Health Center, Inc./762 Lindley Street	762 Lindley Street	Bridgeport	CT	59975
Southwest Community Health Center, Inc./1046 Fairfield Avenue	1046 Fairfield Avenue	Bridgeport	CT	43005
Southwest Community Health Center, Inc./968 Fairfield Avenue	968 Fairfield Avenue	Bridgeport	CT	43003
Southwest Community Health Center, Inc./510 Clinton Avenue	510 Clinton Avenue	Bridgeport	CT	43001
Southwest Community Health Center, Inc./46 Albion Street	46 Albion Street	Bridgeport	CT	43000

Southwest Community Health Center, Inc./509 Park Avenue	509 Park Avenue	Bridgeport	CT	113502
Speare Memorial Hospital/Boulder Point	103 Boulder Point Way	Plymouth	NH	26488
Speare Memorial Hospital	16 Hospital Road	Plymouth	NH	11394
Springfield Hospital/Springfield Hospital	25 Ridgewood Rd	Springfield	VT	23757
Springfield Medical Care Systems/Ludlow Dental Center	8 Main Street	Ludlow	VT	57304
Springfield Medical Care Systems/Mountain Valley Medical Center	38 VT Route 11	Londonderry	VT	57302
Springfield Medical Care Systems/Lane Eye Associates	441 River St	Springfield	VT	57301
Springfield Medical Care Systems/Charlestown Health Center	250 CEDA Road	Charlestown	NH	57300
Springfield Medical Care Systems/Springfield Health Center	100 River St Unit 100	Springfield	VT	57299
Springfield Medical Care Systems/Chester Dental Center	55 VT Route 11	Chester	VT	57298
Springfield Medical Care Systems/Ludlow Health Center	1 Elm St	Ludlow	VT	23683
Springfield Medical Care Systems/Rockingham Medical Group	1 Hospital Court	Bellows Falls	VT	23558
St. Joseph Healthcare/Data Center	14 Resilient Circle	Brunswick	ME	64445
St. Joseph Healthcare/Main Hospital	360 Broadway	Bangor	ME	23549
St. Joseph Healthcare/Healthcare Park	900 Broadway	Bangor	ME	23548
St. Joseph Hospital/Data Center	14 Resilient Circle	Brunswick	ME	64446
St. Joseph Hospital	172 Kinsley St	Nashua	NH	26479
St. Mary's Regional Medical Center/Admin/Finance Office	15 Falcon Road	Lewiston	ME	64631

St. Mary's Regional Medical Center/Oxford Networks Data Center	14 Resilient Circle	Brunswick	ME	50021
St. Mary's Regional Medical Center/IT/IS Offices	106 Campus Avenue	Lewiston	ME	50019
St. Mary's Regional Medical Center/St. Mary's Regional Medical Offices	100 Campus Avenue	Lewiston	ME	49999
St. Mary's Regional Medical Center/Renaissance School	15 Sacred Heart Street	Auburn	ME	49998
St. Mary's Regional Medical Center/Central Maine Urology	431 Franklin Street	Rumford	ME	49996
St. Mary's Regional Medical Center/Center for Family Medicine at Mollison Way	15 Mollison Way	Lewiston	ME	49995
St. Mary's Regional Medical Center/CBO	60 Second Street	Auburn	ME	49994
St. Mary's Regional Medical Center/B Street Community Center	57 Birch Street	Lewiston	ME	49993
St. Mary's Regional Medical Center/Auburn Medical Associates	2 Great Falls Plaza	Auburn	ME	49992
St. Mary's Regional Medical Center/Poland Health Center	1230 Maine St	Poland	ME	34356
St. Mary's Regional Medical Center	93 Campus Avenue	Lewiston	ME	34355
The Health Center/Cabot Health Services	25 Common Road	Cabot	VT	26437
The Health Center - Washington	157 Towne Avenue	Plainfield	VT	23473
The Health Center/Dental Unit, South Barre Office	248 South Main Street	Barre	VT	117832
The Mental Health Center of Greater Manchester/1555 Elm Street	1555 Elm Street	Manchester	NH	94749
The Mental Health Center of Greater Manchester/2 Wall Street	2 Wall Street, Suite 300 & 400	Manchester	NH	94335

The Mental Health Center of Greater Manchester/401 Cypress Street	401 Cypress Street	Manchester	NH	73430
Tri-County Mental Health Services/Rumford	49 Congress St	Rumford	ME	97349
Tri-County Mental Health Services/Androscoggin County	1155 Lisbon St.	Lewiston	ME	96189
Tri-County Mental Health Services/Oxford County	143 Pottle Rd.	Oxford	ME	96187
Tri-County Mental Health Services/Cumberland County	32 No. High St. Suite 1	Bridgton	ME	96186
Tri-County Mental Health Services/Franklin County	144 High St.	Farmington	ME	96183
UVM Medical Center - Green Mountain Urology	1330 Exchange St. Suite 103	Middlebury	VT	35264
UVM Medical Center - Family Medicine - Hinesburg	37 Haystack Drive	Hinesburg	VT	28574
UVM Medical Center - 150 Pioneer Drive	150 Pioneer Drive	Williston	VT	26796
UVM Medical Center - Family Medicine - Milton	28 Centre Drive	Milton	VT	26475
UVM Medical Center - The Division of Plastic, Reconstructive & Cosmetic Surgery	354 Mt. View Drive	Colchester	VT	26447
UVM Medical Center	111 Colchester Avenue	Burlington	VT	23592
UVM Medical Center - Northwest Medical Cardiology / ENT/ Dermatology	133 Fairfield Street	St Albans	VT	16319
UVM Medical Center - Ophthalmology - Berlin	58 East View Lane	Berlin	VT	15832
UVM Medical Center - Dialysis - Newport	189 Prouty Drive	Newport	VT	15120
UVM Medical Center - Dialysis - Rutland	160 Allen Street	Rutland	VT	14772

Valley Regional Hospital/Valley Regional Urgent Care Charlestown	125 Main Street	Charlestown	NH	70475
Valley Regional Hospital	243 Elm St.	Claremont	NH	16672
York Hospital/York Hospital in Sanford	1474 Main Street	Sanford	ME	60192
York Hospital/Main Campus	15 Hospital Drive	York	ME	23800
York Hospital/Wells Regional Medical Services	114 Sanford Road	Wells	ME	23782